



Picture is a representation of actual product

### Approvals

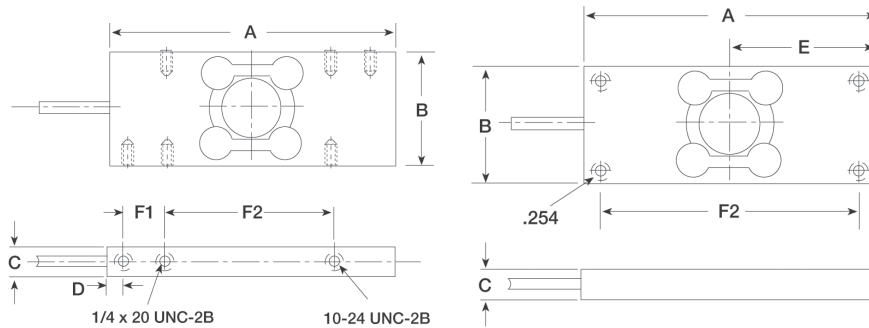


### Order Information

Load Rating	Part #	Est. Weight	Price
6 kg	<b>22335</b>	2 lb	Consult
6 kg	<b>116475</b>	2 lb	Consult
25 lb	<b>17406</b>	2 lb	Consult
50 lb	<b>17407</b>	2 lb	Consult
100 lb	<b>17408</b>	2 lb	Consult

### Dimensions

Rated Capacity	A	B	C	D	E	F1	F2
kg or lb/mm							
6kg	127.0	50.2	18.5	—	63.5	—	107.9
25 to 50 lb	127.0	50.2	18.5	6.3	—	19.0	76.2
100 lb	127.0	46.2	23.8	6.3	—	19.0	76.2



HPS 6 kg to 100 lb  
(PN 22335, 17406, 17407, 17408)

HPS (6 kg)  
(PN 116475)

### Specifications

- Full Scale Output:**  
25 to 100 lb: 3.0 mV/V  
6 kg: 2.0 mV/V
- Output Resistance:**  
350 (± 7) ohm
- Input Resistance:**  
400 (± 6) ohm
- Material/Finish:**  
Stainless steel
- Temperature:**  
Operating:  
0 °F to 150 °F (-18 °C to 65 °C)
- Seal Type:**  
Welded-seal, IP67
- Safe Overload:**  
150% full scale
- Rated Excitation:**  
5 to 10 VAC (15 V maximum)
- Combined Error:**  
0.03% full scale
- Non-repeatability:**  
0.01% full scale
- Insulation Resistance:**  
5,000 megohm
- Cable Length:**  
10 ft
- Cable Color Code:**  
Green +Excitation  
Black -Excitation  
White +Signal  
Red -Signal
- Warranty:**  
One-year limited
- Approvals:**  
cFMus