

# Rice Lake Analog Retrofit Kit

Stainless Steel, Analog Load Cells

## RL82021-40t Load Cells



Shown here with the EL304A signal trim junction box. Picture is a representation of actual product.



### Load Cell Approvals

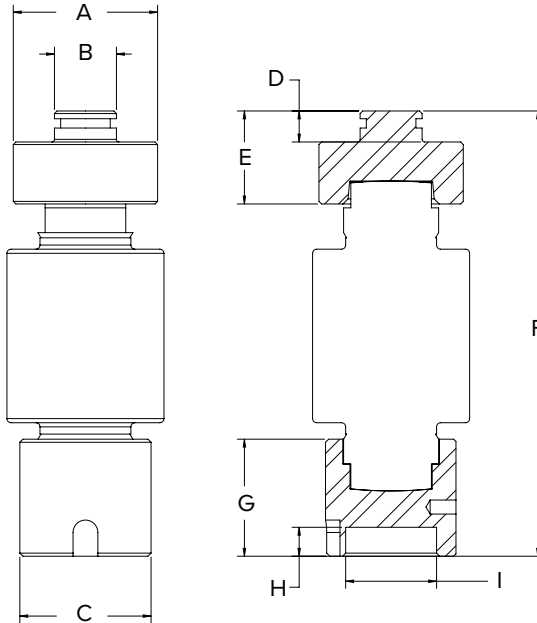


### Digital Retrofit Order information

Description	Part #	Price
8 mount kit (RC1-56,000) 2 EL304A junction boxes	<b>216423</b>	Consult
10 mount kit (RC1-56,000) 3 EL304A junction boxes	<b>216424</b>	Consult

### Dimensions

Analog Load Cells	
A	Ø2.75 in (70 mm)
B	Ø1.18 in (30 mm)
C	Ø2.50 in (64 mm)
D	0.59 in (15 mm)
E	1.77 in (45 mm)
F	8.48 in (215 mm)
G	2.23 in (57 mm)
H	0.55 in (14 mm)
I	Ø1.73 in (44 mm)



### Complete Kit Includes

- Eight or ten RL82021-40t NTEP Certified stainless steel hermetically sealed load cells with upper and lower cups
- One EL304A NEMA Type 4X signal trim junction box
- 100 ft of hostile environment EL147HE SURVIVOR® load cell cable

### Standard Features

- Load cells are NTEP Certified 1:10,000 divisions, Class III\*
- Converts B-TEK digital CPD-M scales to analog
- Load cells have built-in surge protection and rated to IP69K
- Stainless steel overbraided cable
- Rocker design load cells
- Load cups
- Two-year limited warranty

\*Consult your local Weights & Measures Authorities for local Legal for Trade requirements

### Applications

- B-TEK digital truck scale conversion

WEIGH MODULES