



Picture is a representation of actual product.

**Approvals**

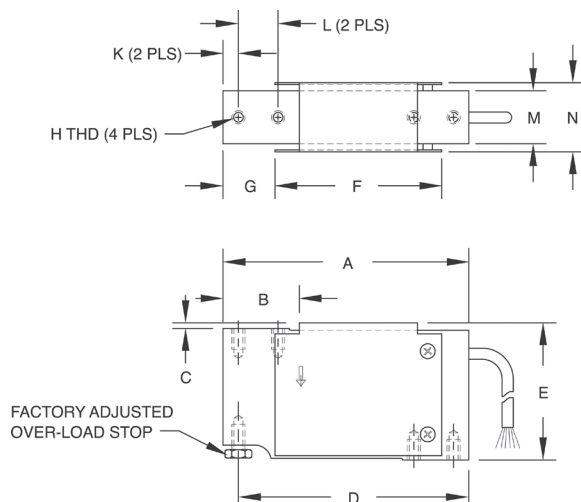


**Order Information**

Load Rating	Part #	Est. Weight	Price
<b>NTEP Certified, Potted</b>			
10 kg	50819	2 lb	Consult
15 kg	50820	2 lb	Consult
20 kg	50821	2 lb	Consult
30 kg	50822	2 lb	Consult
50 kg	50823	2 lb	Consult
<b>Non-NTEP Certified, Potted</b>			
7 kg	17529	2 lb	Consult
10 kg	17530	2 lb	Consult
15 kg	17531	2 lb	Consult
20 kg	17532	2 lb	Consult
30 kg	17533	2 lb	Consult
50 kg	17534	2 lb	Consult
90 kg	17535	2 lb	Consult
<b>Non-NTEP Certified, Unpotted</b>			
3 kg	17527	1 lb	Consult
5 kg	17528	1 lb	Consult

**Dimensions**

Rated Capacity	A	B	C	D	E	F	G	H	K	L	M	N
kg/mm												
3 to 90	118.1	34.0	3.0	110.5	66.0	80.0	25.0	1/4-20 UNC x 13 DP	7.5	19.1	25.4	33.5



**Interchangeable Products**

VPG® TEDEA-HUNTLEIGH®  
1010/1015.....page 311

**Specifications**

- Full Scale Output:**  
2.0 mV/V
- Output Resistance:**  
350 (± 3) ohm, nominal
- Input Resistance:**  
415 (± 15) ohm
- Material/Finish:**  
Anodized aluminum
- Temperature:**  
Compensated:  
14 °F to 104 °F (-10 °C to 40 °C)  
Operating:  
0 °F to 150 °F (-18 °C to 65 °C)
- Seal Type:**  
Potted: IP67  
Unpotted: IP65
- Safe Overload:**  
150% at center of loading point, full scale
- Rated Excitation:**  
5 to 10 VDC (15 V maximum)
- Combined Error:**  
0.02% full scale
- Insulation Resistance:**  
5,000 megohm
- Deflection at Capacity:**  
0.015 in
- Cable Length:**  
Potted: 10 ft  
Unpotted: 3 ft
- Cable Diameter:**  
0.200 in PVC jacket
- Cable Color Code:**  
Green +Excitation  
Black -Excitation  
Red +Signal  
White -Signal  
Blue +Sense  
Brown -Sense
- Max Platform Size:**  
15.75 x 15.75 in
- Warranty:**  
Two-year limited
- Approvals:**  
cFMus  
NTEP 00-062

**RICE LAKE  
LOAD CELLS**