

# RL1600/65016 TWA Series Tank Weighing Assembly

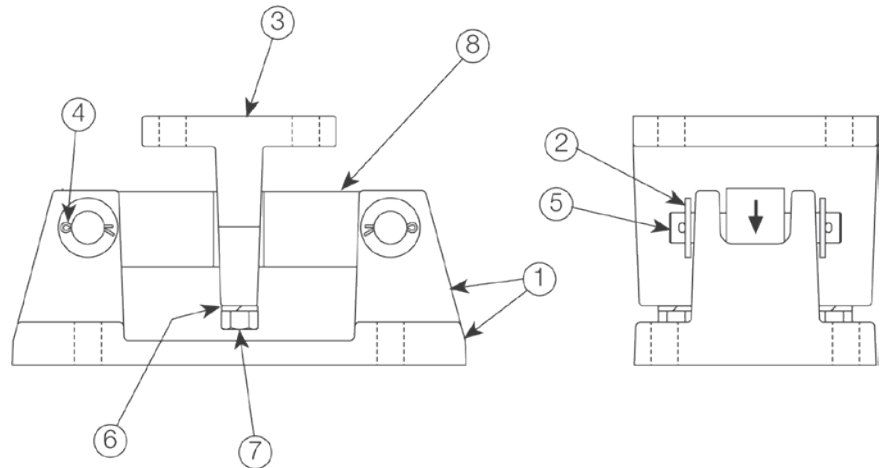
Cast Iron



## Part Number/Price

Ref#	Part#	Description	Price
	16952	Installation manual	Consult
<b>Rated Capacity: 1,000 lb - 5,000 lb</b>			
1	18439	Tank-mount base	Consult
2	15165	Washer	Consult
3	18443	Load plate and clamp	Consult
4	15232	Cotter pin 1/8 in x 3/4 in	Consult
5	18449	Pin	Consult
6	15167	Lock washer	Consult
7	15080	Clamp screw	Consult
8	17300	Load cell, RL75016 - 1,000 lb	Consult
8	17302	Load cell, RL75016 - 1,500 lb	Consult
8	17304	Load cell, RL75016 - 2,000 lb	Consult
8	17306	Load cell, RL75016 - 2,500 lb	Consult
8	17308	Load cell, RL75016 - 3,000 lb	Consult
8	17309	Load cell, RL75016 - 5,000 lb	Consult
8	17268	Sensortronics load cell, 65016 - 1,000 lb	Consult
8	17270	Sensortronics load cell, 65016 - 1,500 lb	Consult
8	17273	Sensortronics load cell, 65016 - 2,500 lb	Consult
8	17275	Sensortronics load cell, 65016 - 5,000 lb	Consult
<b>Rated Capacity: 10,000 lb - 25,000 lb</b>			
1	18441	Tank-mount base	Consult
2	15179	Washer	Consult
3	18445	Load plate and clamp	Consult
4	15237	Cotter pin 1/8 in x 1 in	Consult
5	18448	Pin	Consult
6	15181	Lock washer	Consult
7	15099	Clamp screw	Consult
8	17311	Load cell, RL75016 - 10,000 lb	Consult
8	17313	Load cell, RL75016 - 15,000 lb	Consult
8	17315	Load cell, RL75016 - 20,000 lb	Consult
8	17317	Load cell, RL75016 - 25,000 lb	Consult
8	17277	Sensortronics load cell, 65016 - 10,000 lb	Consult
8	17279	Sensortronics load cell, 65016 - 15,000 lb	Consult
8	17281	Sensortronics load cell, 65016 - 20,000 lb	Consult
8	17282	Sensortronics load cell, 65016 - 25,000 lb	Consult

(See Diagram RL1600-B)



RL1600-B