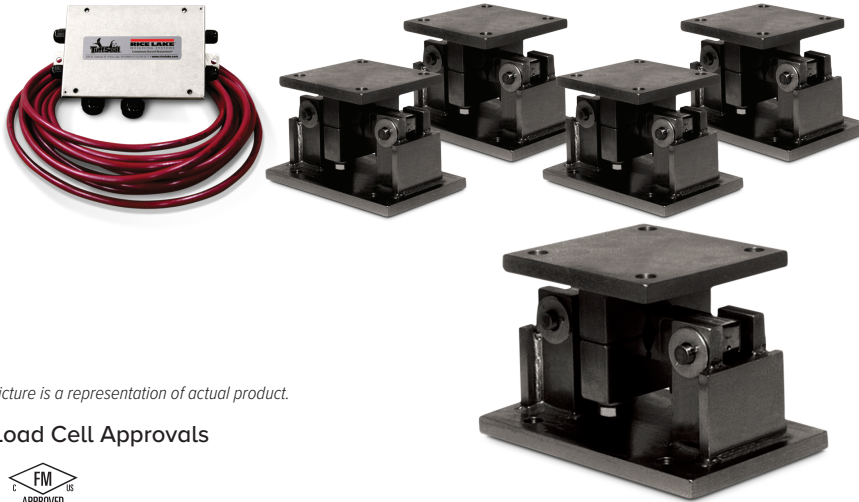


# RL1600 Series with RL75016

Mild Steel, Weigh Modules



Picture is a representation of actual product.

## Load Cell Approvals



## Order Information

Load Rating (Per Module)	Part #	Price
<b>Single Module (Does NOT Include Load Cell)</b>		
1,000 to 5,000 lb	<b>17812</b>	Consult
10,000 to 25,000 lb	<b>17814</b>	Consult
50,000 lb	<b>17816</b>	Consult
75,000 lb	<b>25346</b>	Consult
<b>3-Module Kit</b>		
1,000 lb	<b>18117</b>	Consult
1,500 lb	<b>18118</b>	Consult
2,000 lb	<b>18119</b>	Consult
2,500 lb	<b>18120</b>	Consult
3,000 lb	<b>18121</b>	Consult
5,000 lb	<b>18122</b>	Consult
10,000 lb	<b>18123</b>	Consult
15,000 lb	<b>18124</b>	Consult
20,000 lb	<b>18125</b>	Consult
25,000 lb	<b>18126</b>	Consult
50,000 lb	<b>18127</b>	Consult
75,000 lb	<b>25348</b>	Consult
<b>4-Module Kit</b>		
1,000 lb	<b>18129</b>	Consult
1,500 lb	<b>18130</b>	Consult
2,000 lb	<b>18131</b>	Consult
2,500 lb	<b>18132</b>	Consult
3,000 lb	<b>18133</b>	Consult
5,000 lb	<b>18134</b>	Consult
10,000 lb	<b>18135</b>	Consult
15,000 lb	<b>18136</b>	Consult
20,000 lb	<b>18137</b>	Consult
25,000 lb	<b>18138</b>	Consult
50,000 lb	<b>18139</b>	Consult
75,000 lb	<b>25349</b>	Consult

Contact factory for load cell upgrade

## Dimensions

Rated Capacity	C	H	H1	H2	L	L1	L2	L3	T	W	W1	W2	W3
lb/in													
1,000 to 5,000	0.56	5.00	0.50	0.50	9.25	2.75	4.00	6.25	1/2-13 UNC	5.00	3.75	2.75	4.00
10,000 to 25,000	0.78	7.87	0.75	0.75	12.00	6.00	8.00	7.50	3/4-10 UNC	8.00	6.00	6.00	8.00
50,000 to 75,000	0.78	9.25	1.00	1.00	16.25	6.50	9.00	11.50	1 1/4-7 UNC	12.00	9.50	6.50	9.00

## VPG Sensortronics 65016 Order Information

Load Rating (Per Module)	Part #	Price
<b>3-Module Kit</b>		
1,000 lb	<b>18189</b>	Consult
1,500 lb	<b>18190</b>	Consult
2,500 lb	<b>18192</b>	Consult
5,000 lb	<b>18194</b>	Consult
10,000 lb	<b>18195</b>	Consult
15,000 lb	<b>18196</b>	Consult
20,000 lb	<b>18197</b>	Consult
25,000 lb	<b>18198</b>	Consult
50,000 lb	<b>18199</b>	Consult
75,000 lb	<b>25350</b>	Consult
<b>4-Module Kit</b>		
1,000 lb	<b>18201</b>	Consult
1,500 lb	<b>18202</b>	Consult
2,500 lb	<b>18204</b>	Consult
5,000 lb	<b>18206</b>	Consult
10,000 lb	<b>18207</b>	Consult
15,000 lb	<b>18208</b>	Consult
20,000 lb	<b>18209</b>	Consult
25,000 lb	<b>18210</b>	Consult
50,000 lb	<b>18211</b>	Consult
75,000 lb	<b>25351</b>	Consult
<b>Dummy Load Cells</b>		
1,000 to 5,000 lb	<b>18236</b>	Consult
10,000 to 25,000 lb	<b>18237</b>	Consult
50,000 lb	<b>18238</b>	Consult

Contact factory for load cell upgrade

## Complete Kit Includes

- Three or four RL1600 mild steel compression mounts with RL75016 environmentally protected double-ended shear beam load cells
- One JB4SS NEMA Type 4X stainless steel signal trim junction box
- 25 ft of our hostile environment EL147HE SURVIVOR® load cell cable

## Standard Features

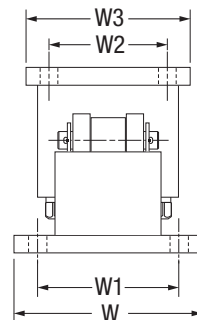
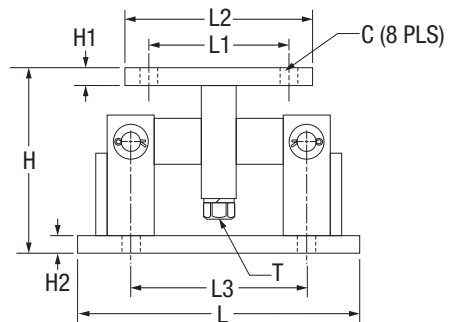
- Capacities (per module): 1,000 to 75,000 lb
- Coated mild steel construction
- Self-checking, easy-to-use design allows module to be bolted directly to tank leg without requiring additional mounting plates or load buttons
- Double-ended shear beam design, center loaded
- Compatible with VPG® Sensortronics® 65016 load cells

## Applications

- Medium- to heavy-capacity tanks, bins and hoppers
- Bulk material management

## Shims, Mild Steel

	Part #	Price
<b>1,000 to 5,000 lb</b>		
0.0625 in	<b>150844</b>	Consult
0.125 in	<b>150845</b>	Consult
0.250 in	<b>150846</b>	Consult
<b>10,000 to 25,000 lb</b>		
0.0625 in	<b>150847</b>	Consult
0.125 in	<b>150848</b>	Consult
0.250 in	<b>150849</b>	Consult
<b>50,000 to 75,000 lb</b>		
0.0625 in	<b>150850</b>	Consult
0.125 in	<b>150851</b>	Consult
0.250 in	<b>150866</b>	Consult



WEIGH MODULES