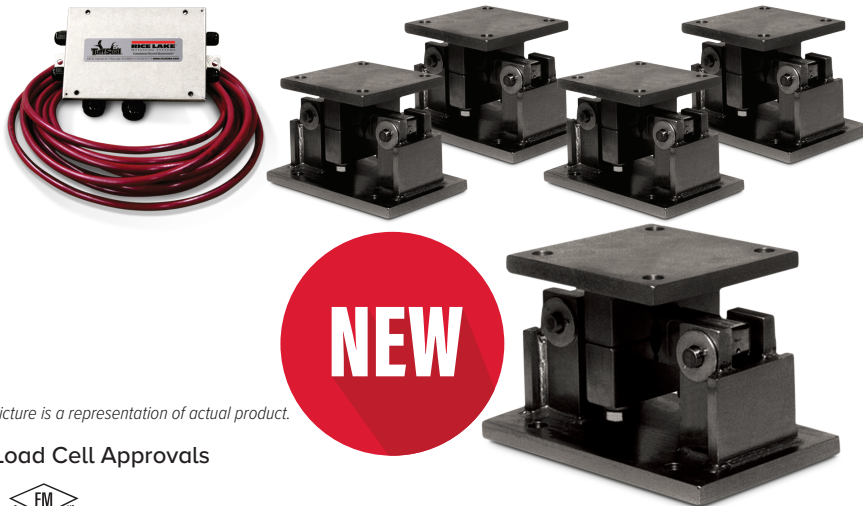


RL1600 Series with RL77032

Mild Steel, Weigh Modules



Picture is a representation of actual product.

Load Cell Approvals



Order Information

Load Rating (Per Module)	Part #	Price
Single Module (Does NOT Include Load Cell)		
1,000 to 5,000 lb	17812	Consult
10,000 to 25,000 lb	17814	Consult
50,000 lb	17816	Consult
75,000 lb	25346	Consult
3-Module Kit		
1,000 lb	225213	Consult
1,500 lb	225214	Consult
2,000 lb	225215	Consult
2,500 lb	225216	Consult
3,000 lb	225217	Consult
5,000 lb	225218	Consult
10,000 lb	225219	Consult
15,000 lb	225220	Consult
20,000 lb	225221	Consult
25,000 lb	225222	Consult
50,000 lb	225223	Consult
75,000 lb	225224	Consult
4-Module Kit		
1,000 lb	225226	Consult
1,500 lb	225227	Consult
2,000 lb	225229	Consult
2,500 lb	225231	Consult
3,000 lb	225232	Consult
5,000 lb	225233	Consult
10,000 lb	225234	Consult
15,000 lb	225235	Consult
20,000 lb	225236	Consult
25,000 lb	225237	Consult
50,000 lb	225238	Consult
75,000 lb	225239	Consult

Dimensions

Rated Capacity	C	H	H1	H2	L	L1	L2	L3	T	W	W1	W2	W3
lb/in													
1,000 to 5,000	0.56	5.00	0.50	0.50	9.25	2.75	4.00	6.25	1/2-13 UNC	5.00	3.75	2.75	4.00
10,000 to 25,000	0.78	7.87	0.75	0.75	12.00	6.00	8.00	7.50	3/4-10 UNC	8.00	6.00	6.00	8.00
50,000 to 75,000	0.78	9.25	1.00	1.00	16.25	6.50	9.00	11.50	1 1/4-7 UNC	12.00	9.50	6.50	9.00

VPG Scentroidrics 65016 Order Information

Load Rating (Per Module)	Part #	Price
3-Module Kit		
1,000 lb	18189	Consult
1,500 lb	18190	Consult
2,500 lb	18192	Consult
5,000 lb	18194	Consult
10,000 lb	18195	Consult
15,000 lb	18196	Consult
20,000 lb	18197	Consult
25,000 lb	18198	Consult
50,000 lb	18199	Consult
75,000 lb	25350	Consult
4-Module Kit		
1,000 lb	18201	Consult
1,500 lb	18202	Consult
2,500 lb	18204	Consult
5,000 lb	18206	Consult
10,000 lb	18207	Consult
15,000 lb	18208	Consult
20,000 lb	18209	Consult
25,000 lb	18210	Consult
50,000 lb	18211	Consult
75,000 lb	25351	Consult
Dummy Load Cells		
1,000 to 5,000 lb	18236	Consult
10,000 to 25,000 lb	18237	Consult
50,000 lb	18238	Consult

Complete Kit Includes

- Three or four RL1600 mild steel compression mounts with RL77032 environmentally protected double-ended shear beam load cells
- One JB4SS NEMA Type 4X stainless steel signal trim junction box
- 25 ft of our hostile environment EL147HE SURVIVOR® load cell cable

Standard Features

- Capacities (per module): 1,000 to 75,000 lb
- Coated mild steel construction
- Self-checking, easy-to-use design allows module to be bolted directly to tank leg without requiring additional mounting plates or load buttons
- Double-ended shear beam design, center loaded
- Compatible with VPG® Scentroidrics® 65016 load cells

Applications

- Medium- to heavy-capacity tanks, bins and hoppers
- Bulk material management

Shims, Mild Steel

	Part #	Price
1,000 to 5,000 lb		
0.0625 in	150844	Consult
0.125 in	150845	Consult
0.250 in	150846	Consult
10,000 to 25,000 lb		
0.0625 in	150847	Consult
0.125 in	150848	Consult
0.250 in	150849	Consult
50,000 to 75,000 lb		
0.0625 in	150850	Consult
0.125 in	150851	Consult
0.250 in	150866	Consult

