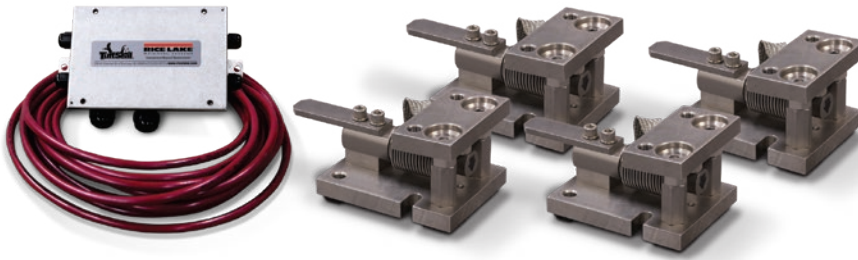


RL1700 HE

Light- to Medium-capacity Weigh Modules



Picture is a representation of actual product.

Order Information

| Load Rating (Per Module) | Part # | Price |
|---|--------|---------|
| Single Module (Includes Load Cell) | | |
| 5 kg | 32687 | Consult |
| 10 kg | 32688 | Consult |
| 20 kg | 32689 | Consult |
| 50 kg | 32690 | Consult |
| 100 kg | 32691 | Consult |
| 200 kg | 32692 | Consult |
| 250 kg | 32693 | Consult |
| 500 kg | 32974 | Consult |
| 1,000 kg | 32973 | Consult |
| 2,000 kg | 32972 | Consult |
| 5,000 kg | 32971 | Consult |
| 3-Module Kit | | |
| 5 kg | 32920 | Consult |
| 10 kg | 32921 | Consult |
| 20 kg | 32922 | Consult |
| 50 kg | 32923 | Consult |
| 100 kg | 32924 | Consult |
| 200 kg | 32925 | Consult |
| 250 kg | 32926 | Consult |
| 500 kg | 32980 | Consult |
| 1,000 kg | 32981 | Consult |
| 2,000 kg | 32982 | Consult |
| 5,000 kg | 32983 | Consult |
| 4-Module Kit | | |
| 5 kg | 32927 | Consult |
| 10 kg | 32928 | Consult |
| 20 kg | 32929 | Consult |
| 50 kg | 32930 | Consult |
| 100 kg | 32931 | Consult |
| 200 kg | 32932 | Consult |
| 250 kg | 32933 | Consult |
| 500 kg | 32984 | Consult |
| 1,000 kg | 32985 | Consult |
| 2,000 kg | 32986 | Consult |
| 5,000 kg | 32987 | Consult |

Dimensions

| Rated Capacity | C | B | *H1 | **H2 | L | L1 | L2 | L3 | L4 | L5 | W | W1 | W2 | W3 |
|----------------|------|------------|-------|-------|-------|------|-------|------|------|------|-------|------|------|------|
| kg/mm | | | | | | | | | | | | | | |
| 5 to 250 | 13.1 | 1/2-20 UNF | 80.0 | 86.1 | 131.8 | 63.8 | 76.0 | 42.0 | 56.0 | 14.1 | 101.4 | 70.0 | 15.5 | 25.4 |
| 500 to 2,000 | 13.1 | 5/8-18 UNF | 101.6 | 109.4 | 165.1 | 71.2 | 129.5 | 15.5 | 75.5 | 60.0 | 110.0 | 70.0 | 20.0 | 31.8 |
| 5,000 | 19.8 | 3/4-10 UNC | 135.0 | 143.0 | 215.0 | 81.0 | 161.0 | 20.0 | 90.0 | 70.0 | 150.0 | 90.0 | 30.0 | 40.0 |

* In weighing position ** In jacked-up position for load cell shipping or removal

Complete Kit Includes

- Three or four RL1700 HE stainless steel compression mounts with NTEP Certified RL9018SS (5 to 250 kg) or RLHTO (500 to 5,000 kg) stainless steel, hermetically sealed single-ended beam load cells
- One JB4SS NEMA Type 4X stainless steel signal-trim junction box
- 25 ft of our hostile environment EL147HE SURVIVOR load cell cable

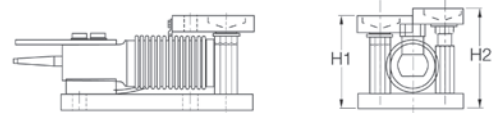
Standard Features

- Capacities (per module) 5 kg to 5,000 kg
- All stainless steel, weldless construction retains less residue and allows fast, thorough cleaning
- Bolt-in-place design; module bolts directly to tank leg without requiring additional load buttons or mounting plates
- Self-checking with lift-off/tip-over protection and jacking/shipping bolts
- Load cell is isolated from overload in all directions

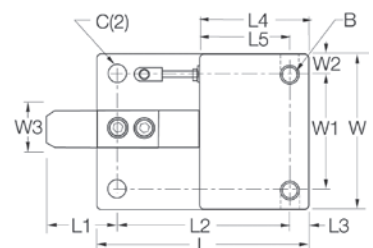
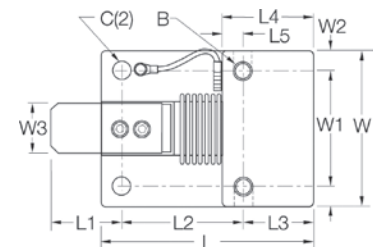
Applications

- Multi-ingredient micro-batching
- Meat and poultry processing
- Batching/blending
- Dye/ink blending

Load Cell Approvals



5 kg - 250 kg capacities



500 kg - 5000 kg capacities

SURVIVOR WEIGH MODULES