

RL1800 Series with MLC Coated Load Cell

Stainless Steel, Weigh Modules



Picture is a representation of actual product.

Load Cell Approvals



Complete Kit Includes

- Three or four RL1800 stainless steel compression mounts with MLC coated RL32018 NTEP Certified single-ended beam load cells
- One JB4SS NEMA Type 4X stainless steel signal trim junction box
- 25 ft of hostile environment EL147HE SURVIVOR® load cell cable

Standard Features

- Capacities (per module): 1,000 to 10,000 lb
- NTEP Certified cells in 1,000 to 10,000 lb capacities
- Stainless steel mounts
- Center-pivoted, tension loading design
- Self-checking, multi-directional movement
- Load is suspended on high-strength bolt instead of wire rope
- Design incorporates spherical washers for self centering
- Coated load cells for corrosion protection

Applications

- Conveyors
- Medium-capacity tanks and hoppers

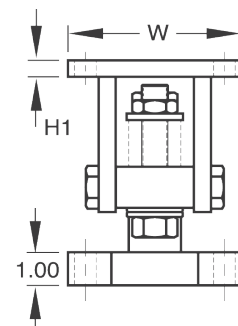
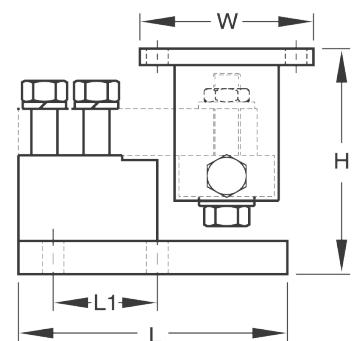
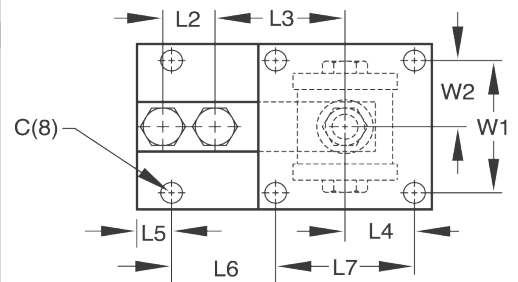
Stainless Steel Order Information

Load Rating (Per Module)	Part #	Price
Single Module (Does NOT Include Load Cell)		
1,000 to 4,000 lb	17818	Consult
5,000 to 10,000 lb	17820	Consult
3-Module Kit		
1,000 lb	219894	Consult
1,500 lb	219896	Consult
2,000 lb	219898	Consult
2,500 lb	219900	Consult
3,000 lb	219902	Consult
4,000 lb	219904	Consult
5,000 SE lb	219906	Consult
5,000 LE lb	219908	Consult
10,000 lb	219910	Consult
4-Module Kit		
1,000 lb	219895	Consult
1,500 lb	219897	Consult
2,000 lb	219899	Consult
2,500 lb	219901	Consult
3,000 lb	219903	Consult
4,000 lb	219905	Consult
5,000 SE lb	219907	Consult
5,000 LE lb	219909	Consult
10,000 lb	219911	Consult

SE=Small envelope; LE=Large envelope

Dimensions

Rated Capacity	C	H Min/Max	H1	L	L1	L2	L3	L4	L5	L6	L7	W	W1	W2
lb/in														
1,000 to 5,000 SE	0.62	5.25/5.56	0.50	6.00	2.00	1.00	3.00	2.00	0.68	1.94	4.00	5.00	4.00	2.00
5,000 LE to 10,000	0.62	6.12/6.62	0.50	7.75	3.00	1.50	3.75	2.00	1.03	2.97	4.00	5.00	4.00	2.00



WEIGH MODULES