

RL1800 Series

Mild Steel/Stainless Steel Weigh Modules

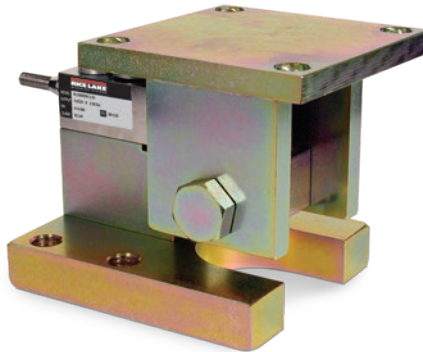


Picture is a representation of actual product.

Load Cell Approvals



Except 250lb



Complete Kit Includes

- Three or four RL1800 mild steel or stainless steel compression mounts with NTEP Certified RL32018 single-ended beam load cells, RL32018S used in stainless steel
- One JB4SS NEMA Type 4X stainless steel signal trim junction box
- 25 ft of hostile environment EL147HE SURVIVOR® load cell cable

Standard Features

- Capacities (per module): 250 to 10,000 lb
- NTEP Certified cells in 500 to 10,000 lb capacities, except 3,000 lb
- Zinc plated mild steel/stainless steel construction
- Center-pivoted, tension loading design
- Self-checking, multi-directional movement
- Load is suspended on high-strength bolt instead of wire rope
- Design incorporates spherical washers for self centering

Applications

- Conveyors
- Medium-capacity tanks and hoppers
- Mixers and blenders
- Process measurement and control

WEIGH MODULES

Mild Steel Order Information

Load Rating (Per Module)	Part #	Price
Single Module (Does NOT Include Load Cell)		
250 lb to 5,000 lb SE	17817	Consult
5,000 lb LE to 10,000 lb	17819	Consult
3-Module Kit		
250 lb*	18075	Consult
500 lb	18076	Consult
1,000 lb	18077	Consult
2,000 lb	18078	Consult
2,500 lb	18079	Consult
3,000 lb	18080	Consult
4,000 lb	18081	Consult
5,000 lb SE	18082	Consult
5,000 lb LE	18083	Consult
10,000 lb	18084	Consult
4-Module Kit		
250 lb*	18085	Consult
500 lb	18086	Consult
1,000 lb	18087	Consult
2,000 lb	18088	Consult
2,500 lb	18089	Consult
3,000 lb	18090	Consult
4,000 lb	18091	Consult
5,000 lb SE	18092	Consult
5,000 lb LE	18093	Consult
10,000 lb	18094	Consult

SE=Small envelope; LE=Large envelope

* Non-NTEP

Stainless Steel Order Information

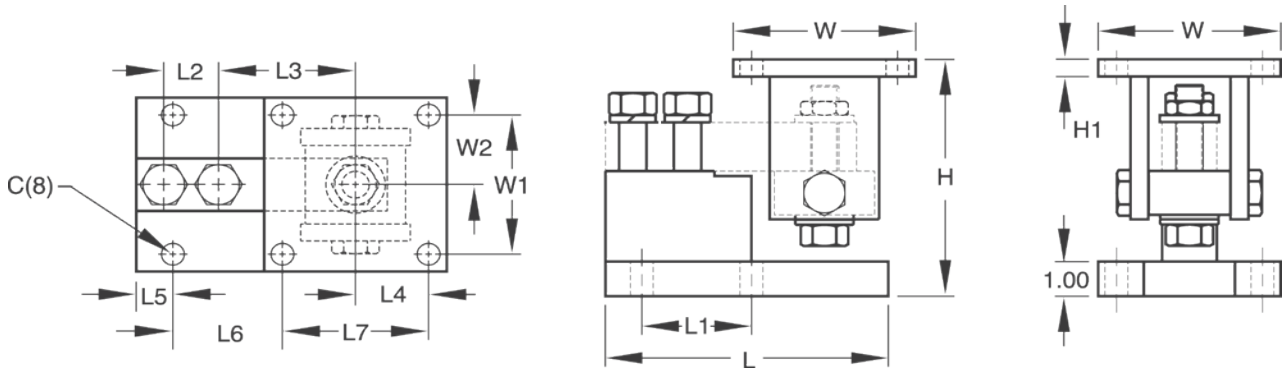
Load Rating (Per Module)	Part #	Price
Single Module (Does NOT Include Load Cell)		
250 lb to 4,000 lb	17818	Consult
5,000 lb to 10,000 lb	17820	Consult
3-Module Kit		
1,000 lb	18095	Consult
2,000 lb	18096	Consult
2,500 lb	18097	Consult
4,000 lb	18099	Consult
5,000 lb LE	18100	Consult
10,000 lb	18101	Consult
4-Module Kit		
1,000 lb	18102	Consult
2,000 lb	18103	Consult
2,500 lb	18104	Consult
4,000 lb	18106	Consult
5,000 lb LE	18107	Consult
10,000 lb	18108	Consult
Dummy Cell		
Dummy load cell 1 k to 5 k SE	22980	Consult

RL1800 Series

Mild Steel/Stainless Steel Weigh Modules

Dimensions

Rated Capacity	C	H Min/Max	H1	L	L1	L2	L3	L4	L5	L6	L7	W	W1	W2
Mild Steel Construction														
lb/in														
250 to 5,000SE	0.62	5.25/5.56	0.50	6.00	2.00	1.00	3.00	2.00	0.68	1.94	4.00	5.00	4.00	2.00
5,000LE to 10,000	0.62	6.12/6.62	0.50	7.75	3.00	1.50	3.75	2.00	1.03	2.97	4.00	5.00	4.00	2.00
Stainless Steel Construction														
lb/in														
1,000 to 4,000	0.62	5.25/5.56	0.50	6.00	2.00	1.00	3.00	2.00	0.68	1.94	4.00	5.00	4.00	2.00
5,000 to 10,000	0.62	6.12/6.62	0.50	7.75	3.00	1.50	3.75	2.00	1.03	2.97	4.00	5.00	4.00	2.00



WEIGH MODULES