

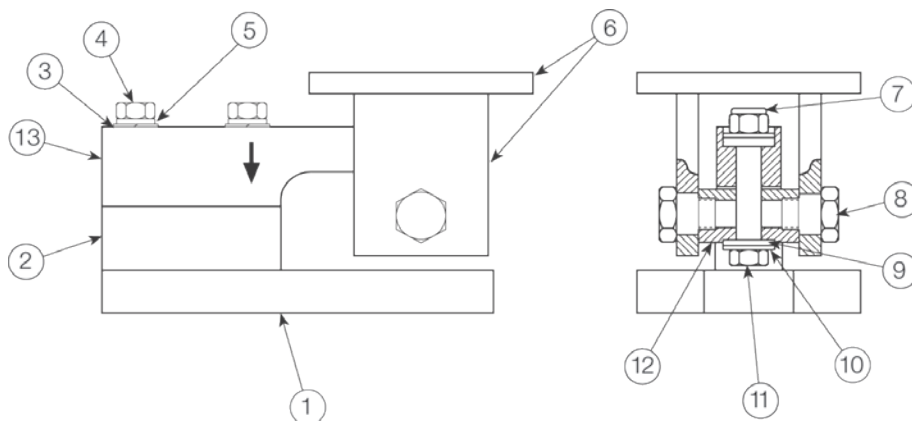
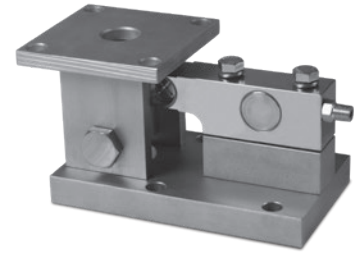
RL1900 Series Mounting Assembly

Stainless Steel

Part Number/Price

Ref#	Part#	Description	Price
	25711	Installation manual	Consult
Rated Capacity: 1,000 lb - 5,000 lb			
1	18254	Base plate	Consult
2	18253	Load cell mounting block	Consult
3	15175	Flat washer	Consult
4	14767	Load cell bolt	Consult
5	15168	Lock washer	Consult
6	22293	Upper support	Consult
7	14666	Nylon lock nut	Consult
8	22735	Shoulder bolt	Consult
9	22736	Concave washer	Consult
10	22737	Convex washer	Consult
11	14763	Hex-head loading bolt	Consult
12	22738	Upper support loading block	Consult
13	34310	Load cell, RL SSB - 1,000 lb	Consult
	34311	Load cell, RL SSB - 2,000 lb	Consult
	34312	Load cell, RL SSB - 5,000 lb	Consult
Rated Capacity: 10,000 lb			
1	18280	Base plate	Consult
2	18281	Load cell mounting block	Consult
3	15180	Flat washer	Consult
4	14790	Load cell bolt	Consult
5	15182	Lock washer	Consult
6	18282	Upper support	Consult
7	14689	Nylon lock nut	Consult
8	22735	Shoulder bolt	Consult
9	22742	Concave washer	Consult
10	22743	Convex washer	Consult
11	14789	Hex-head loading bolt	Consult
12	22744	Upper support loading block	Consult
13	34313	Load cell, RL SSB - 10,000 lb	Consult

(See Diagram RL1900-A)



RL1900-A