

TENSION LINK
RL2010

Stainless Steel, Environmentally Sealed, IP67



Picture is a representation of actual product.

Order Information

| Load Rating | Part # | Est. Weight | Price |
|--------------------------|--------|-------------|---------|
| 5,000 lb | 117731 | 5 lb | Consult |
| 10,000 lb | 117732 | 5 lb | Consult |
| 25,000 lb | 117733 | 8 lb | Consult |
| 50,000 lb | 117735 | 34 lb | Consult |
| 75,000 lb | 117736 | 34 lb | Consult |
| 100,000 lb | 117737 | 56 lb | Consult |
| 150,000 lb | 117738 | 56 lb | Consult |
| 200,000 lb | 117739 | 95 lb | Consult |
| 250,000 lb | 117740 | 117 lb | Consult |
| 300,000 lb | 117741 | 191 lb | Consult |
| 500,000 lb | 117742 | 191 lb | Consult |
| Replacement Parts | | | |
| 40 ft load cell cable | 187132 | | Consult |

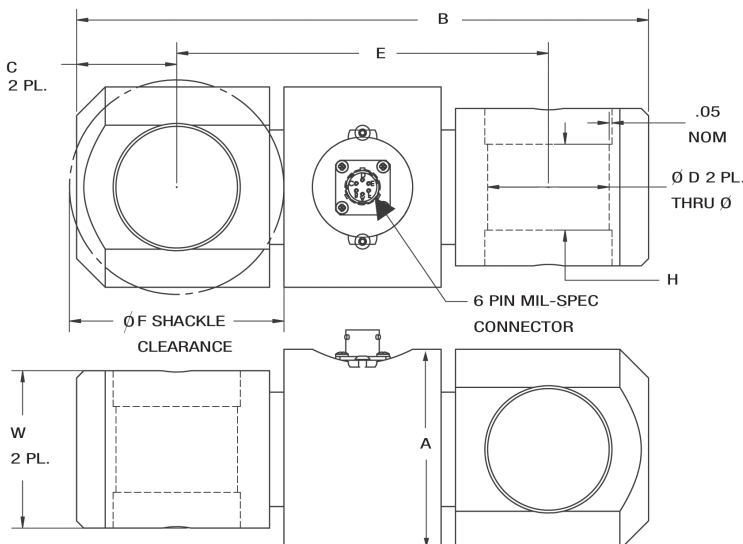
NOTE: Consult factory for shackles

Specifications

- Full Scale Output:**
3.0 (± 0.1%) mV/V
- Bridge Resistance:**
350 ohm, nominal
- Material/Finish:**
Stainless steel
- Temperature:**
Operating:
0 °F to 150 °F (-18 °C to 65 °C)
- Seal Type:**
Environmentally sealed, IP67
- Safe Overload:**
150% full scale
- Rated Excitation:**
5 to 10 VDC (15 V maximum)
- Linearity:**
0.05% full scale
- Repeatability:**
0.03% full scale
- Insulation Resistance:**
5,000 megohm
- Cable Length:**
40 ft
- Cable Diameter:**
0.25 in
Polyurethane jacket with connector
- Cable Color Code:**
Green +Excitation
Black -Excitation
White +Signal
Red -Signal
- Warranty:**
Two-year limited

Dimensions

| Rated Capacity | A | B | C | ØD | E | ØF | W | H |
|--------------------|------|-------|------|------|-------|------|------|------|
| 5,000 to 10,000 | 2.00 | 6.50 | 1.00 | 1.05 | 4.50 | 2.38 | 1.37 | 0.75 |
| 25,000 | 2.75 | 8.00 | 1.38 | 1.55 | 5.25 | 2.88 | 2.00 | 1.00 |
| 50,000 to 75,000 | 3.25 | 14.00 | 2.50 | 2.31 | 9.00 | 5.00 | 3.00 | 1.75 |
| 100,000 to 150,000 | 4.00 | 16.00 | 2.88 | 2.88 | 10.25 | 6.25 | 4.00 | 2.00 |
| 200,000 | 6.00 | 18.00 | 3.25 | 3.38 | 11.50 | 6.50 | 4.75 | 2.38 |
| 250,000 | 6.50 | 20.00 | 3.75 | 3.88 | 12.50 | 7.50 | 5.00 | 2.75 |
| 300,000 to 500,000 | 7.50 | 24.00 | 4.50 | 4.31 | 15.00 | 9.50 | 5.40 | 3.00 |



RICE LAKE
LOAD CELLS