

# RL2200SS Series

Stainless Steel, Tank, Hopper and Vessel Weighing Assembly



Picture is a representation of actual product.

## Order Information

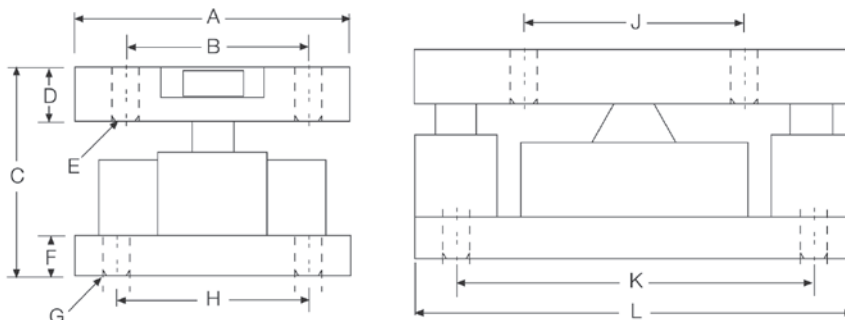
Load Rating (Per Module)	Part #	Price
<b>Single Module</b>		
2,500 lb	76657	Consult
5,000 lb	45845	Consult
10,000 lb	45844	Consult
25,000 lb	45843	Consult
50,000 lb	45842	Consult
<b>3-Module Kit</b>		
2,500 lb	76899	Consult
5,000 lb	46478	Consult
10,000 lb	46479	Consult
25,000 lb	46480	Consult
50,000 lb	46481	Consult
<b>4-Module Kit</b>		
2,500 lb	76900	Consult
5,000 lb	46482	Consult
10,000 lb	46483	Consult
25,000 lb	46484	Consult
50,000 lb	46485	Consult

## Replacement Load Cell Order Information

Load Rating (Per Module)	Part #	Price
2,500 lb	76655	Consult
5,000 lb	45712	Consult
10,000 lb	45713	Consult
25,000 lb	45714	Consult
50,000 lb	45715	Consult

## Dimensions

Rated Capacity	A	B	C	D	E	F	G	H	J	K	L
lb/in											
2,500 to 10,000	5.00	3.50	4.00	1.00	0.52	1.00	0.52	3.50	4.00	6.50	8.00
25,000 to 50,000	6.00	4.50	5.00	1.25	0.78	1.00	0.78	4.50	5.00	7.75	10.00



## Complete Kit Includes

- Three or four RL2200 stainless steel mounting assemblies with RL2200SS stainless steel, hermetically sealed, compression disk load cells
- One JB4SS NEMA Type 4X stainless steel signal trim junction box
- 25 ft of hostile environment EL147HE SURVIVOR® load cell cable

## Applications

- Tank, hopper or vessel weighing
- Belt or roller conveyors
- Scale platforms and screw feeders

## Specifications

### Full Scale Output:

4.0 mV/V  
2.0 mV/V (2,500 lb)

### Bridge Resistance:

350 ohm nominal

### Material/Finish:

Stainless steel

### Safe Overload:

150% full scale

### Rated Excitation:

5 to 10 VDC (20 V maximum)

### Nonlinearity:

0.05% full scale

### Hysteresis:

0.03% full scale

### Temperature:

Compensated range  
15 °F to 115 °F (9 °C to 46 °C)

### Insulation Resistance:

5,000 megohm

### Seal Type:

Hermetically sealed, IP66/68

### Cable Length:

30 ft

### Cable Color Code:

Red +Excitation  
Black -Excitation  
White +Signal  
Green -Signal

### Warranty:

Two-year limited