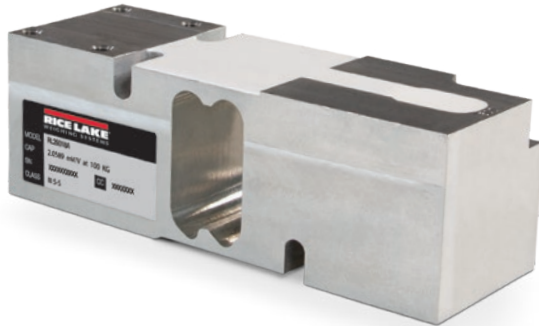


SINGLE POINT
RL26018A

Aluminum, Environmentally Sealed, NTEP Certified 1:5,000 Class III Single Cell, IP67



Picture is a representation of actual product.

Approvals

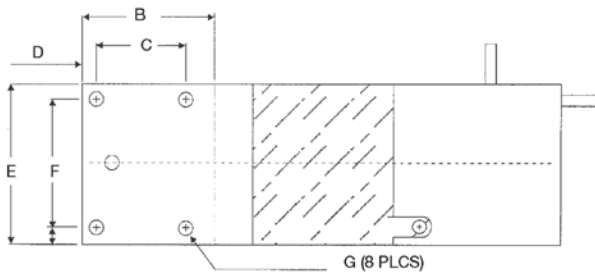
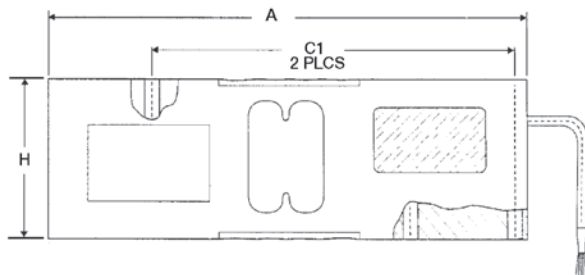


Order Information

Load Rating	Part #	Est. Weight	Price
50 kg	188682	5 lb	Consult
75 kg	188683	5 lb	Consult
100 kg	188684	5 lb	Consult
150 kg	188685	5 lb	Consult
200 kg	188686	5 lb	Consult
250 kg	188687	5 lb	Consult
300 kg	188688	5 lb	Consult
500 kg	188689	5 lb	Consult
635 kg	188690	5 lb	Consult

Dimensions

Rated Capacity	A	B	C	C1	D	E	F	G	H
kg/mm									
50 to 635	188.0	52.0	35.0	142.0	5.5	63.5	50.0	5/16-18 UNC	62.3



Interchangeable Products

- RICE LAKE WEIGHING SYSTEMS
RL1260 page 178
- RICE LAKE WEIGHING SYSTEMS
RLPWM16..... page 172
- VPG® TEDEA-HUNTLEIGH®
1260 page 334

Specifications

- Full Scale Output:**
2.0 mV/V nominal
- Output Resistance:**
350 (± 3) ohm
- Input Resistance:**
415 (± 15) ohm
- Material/Finish:**
Anodized aluminum
- Temperature:**
Compensated range
14 °F to 104 °F (-10 °C to 40 °C)
Operating range
0 °F to 150 °F (-18 °C to 65 °C)
- Seal Type:**
Environmentally sealed, IP67
- Safe Overload:**
150% of full scale
- Rated Excitation:**
5 to 10 VDC (15 V maximum)
- Insulation Resistance:**
> 5,000 megohm
- Combined Error:**
0.02% full scale
- Deflection:**
0.3 to 0.5 mm
- Cable Length:**
10 ft
- Cable Color Code:**
Green +Excitation
Black -Excitation
Red +Signal
White -Signal
Blue +Sense
Yellow -Sense
- Warranty:**
Two-year limited
- Approvals:**
cFMus
NTEP 18-108

RICE LAKE
LOAD CELLS