

RL32018

Alloy Steel, Environmentally Sealed, NTEP Certified 1:5,000 Class III Multiple Cell, IP66



Picture is a representation of actual product.

Approvals



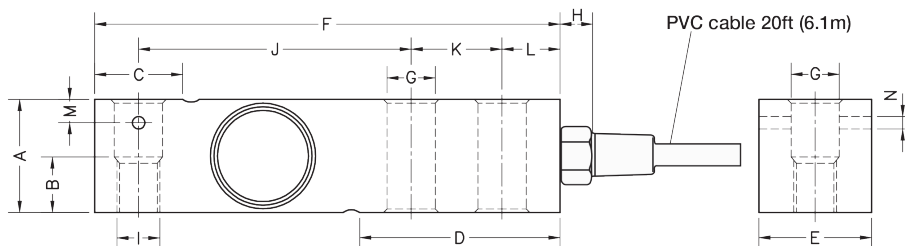
Order Information

| Load Rating | Part # | Est. Weight | Price |
|-------------------------------|--------|-------------|---------|
| NTEP Certified | | | |
| 500 lb | 189151 | 2 lb | Consult |
| 1,000 lb | 189152 | 2 lb | Consult |
| 1,500 lb | 191732 | 2 lb | Consult |
| 2,000 lb | 189153 | 2 lb | Consult |
| 2,500 lb | 189154 | 2 lb | Consult |
| 3,000 lb | 189155 | 5 lb | Consult |
| 4,000 lb | 189156 | 5 lb | Consult |
| 5,000 lb SE | 189157 | 5 lb | Consult |
| 5,000 lb LE | 189158 | 5 lb | Consult |
| 10,000 lb | 189159 | 5 lb | Consult |
| Non-NTEP Certified | | | |
| 250 lb | 189150 | 2 lb | Consult |
| 15,000 lb* | 189160 | 10 lb | Consult |
| 20,000 lb* | 189161 | 10 lb | Consult |
| With Overbraided Cable | | | |
| 2,500 lb | 209166 | 10 lb | Consult |
| 20,000 lb* | 197558 | 10 lb | Consult |

SE=small envelope; LE=large envelope
* Pending NTEP

Dimensions

| Rated Capacity lb/in | A | B | C | D | E | F | G | H | I | J | K | L | M | N |
|-------------------------|------|------|------|------|------|------|------|------|------------|------|------|------|------|------|
| 250 to 500 | 1.00 | 0.59 | 0.96 | 2.20 | 1.24 | 5.12 | 0.53 | 0.70 | 1/2-20 UNF | 3.00 | 1.00 | 0.62 | 0.25 | 0.13 |
| 1,000 to 5,000 SE | 1.24 | 0.59 | 0.96 | 2.20 | 1.24 | 5.12 | 0.53 | 0.70 | 1/2-20 UNF | 3.00 | 1.00 | 0.62 | 0.25 | 0.13 |
| 5,000 LE to 10,000 | 1.50 | - | 1.45 | 2.99 | 1.50 | 6.75 | 0.80 | 0.70 | 3/4-16 UNF | 3.75 | 1.50 | 0.75 | - | - |
| 15,000 to 20,000 | 2.00 | - | - | 4.00 | 2.00 | 8.75 | 1.06 | - | 1-14 UNS | 4.90 | 2.00 | 1.00 | - | - |



Interchangeable Products

VPG® SENSORTRONICS®
65023A.....page 281
VPG® CELTRON®
SQB.....page 191

Weigh Module Available

RICE LAKE WEIGHING SYSTEMS
RL50210TA.....page 41
RICE LAKE WEIGHING SYSTEMS
RL1800 Series.....page 52

Specifications

Full Scale Output:
3.0 mV/V ± 0.05%
mV/V/ohm calibration

Output Resistance:
350 (± 3) ohm

Input Resistance:
400 (± 20) ohm

Material/Finish:
Alloy steel, nickel plated

Temperature:
Compensated:
-14 °F to 104 °F (-10 °C to 40 °C)
Operating:
0 °F to 150 °F (-18 °C to 65 °C)

Seal Type:
Environmentally sealed, IP66

Safe Overload:
150% full scale

Safe Sideload:
100% full scale

Rated Excitation:
10 VDC (15 V maximum)

Combined Error:
0.017% full scale

Insulation Resistance:
> 5,000 megohm

Deflection at Capacity:
0.2 to 0.4 mm

Cable Length:
20 ft

Cable Color Code:
Red +Excitation
Black -Excitation
Green +Signal
White -Signal

Warranty:
Two-year limited

Approvals:
NTEP 18-106
cFMus FM18US0307X