

SINGLE-ENDED BEAM RL35023S Coated

Stainless Steel, Environmentally Sealed, NTEP Certified 1:5,000 Class III Multiple Cell, IP67



Picture is a representation of actual product.

Approvals



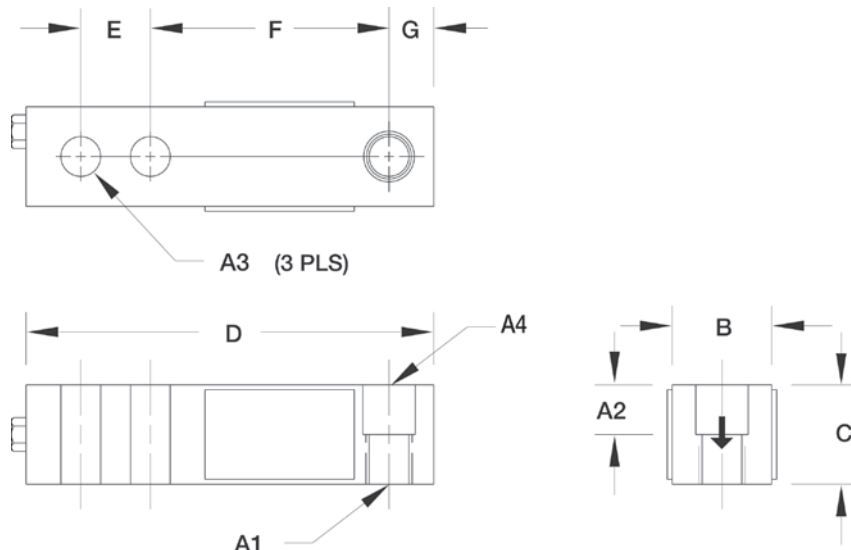
Order Information

Load Rating	Part #	Est. Weight	Price
1,000 lb	182754	3 lb	Consult
2,000 lb	182755	3 lb	Consult
2,500 lb	182756	3 lb	Consult
4,000 lb	182757	3 lb	Consult
5,000 lb	182758	3 lb	Consult
10,000 lb	182759	3 lb	Consult
Conduit Adapter Kit (must be factory installed to maintain warranty)			
3/8-24 nipple	31533*	1 lb	Consult
3/8-24 to 1/4-18 NPT	31534*	1 lb	Consult

* PN 31533 and PN 31534 must be installed together to form the Conduit Adapter Kit

Dimensions

Rated Capacity	A1	A2	A3	A4	B	C	D	E	F	G
1,000 to 4,000	1/2-20 UNF	0.62	0.53	0.53 dia	1.25	1.25	5.12	1.00	3.00	0.50
5,000 to 10,000	3/4-16 UNF	0.75	0.78	0.78 dia	1.50	1.50	6.75	1.50	3.75	0.75



Interchangeable Products

VPG® SENSORTRONICS®	
65023S* page 299
VPG® SENSORTRONICS	
65023SS* page 298
VPG® CELTRON	
SQB-HSS* page 206

Weigh Module Available

RICE LAKE WEIGHING SYSTEMS	
RL50210TApage 43
RICE LAKE WEIGHING SYSTEMS	
RL1800 Series page 54

*Cells are uncoated

Specifications

Full Scale Output:	3.0 mV/V
Output Resistance:	349 to 355 ohm
Input Resistance:	343 to 357 ohm
Material/Finish:	Stainless steel, coated
Temperature:	Compensated range 14 °F to 104 °F (-10 °C to 40 °C) Operating range 0 °F to 150 °F (-18 °C to 65 °C)
Seal Type:	Environmentally sealed, IP67
Safe Overload:	150% full scale
Safe Sideload:	100% full scale
Rated Excitation:	5 to 10 VDC (15 V maximum)
Combined Error:	0.02% full scale
Deflection at Capacity:	500 to 4,000 lb: 0.017 to 0.025 in 5,000 to 10,000 lb: 0.025 to 0.035 in
Cable Length:	20 ft
Cable Diameter:	0.200 in polyurethane jacket
Cable Color Code:	Red +Excitation Black -Excitation Green +Signal White -Signal
Insulation Resistance:	5,000 megohm
Warranty:	Two-year limited
Approvals:	cFMus NTEP 94-134

RICE LAKE
LOAD CELLS