

SINGLE-ENDED BEAM

RL35082

Stainless Steel, Welded Seal IP67/Hermetic Seal IP69K, NTEP Certified 1:5,000 Class III Multiple Cell

**DISCONTINUED
LIMITED STOCK
AVAILABLE**



IP67 model



IP69K model

APPROVALS



Interchangeable Products

RICE LAKE WEIGHING SYSTEMS

RL32019S-HE (30ft cable) page 136

RICE LAKE WEIGHING SYSTEMS

RL32218S-HE (20ft cable) page 137

VPG SENSORTRONICS®

65083S..... page 323

Weigh Module Available

RICE LAKE WEIGHING SYSTEMS

RL50210 TA..... page 56

RICE LAKE WEIGHING SYSTEMS

RL1800 Series..... page 68

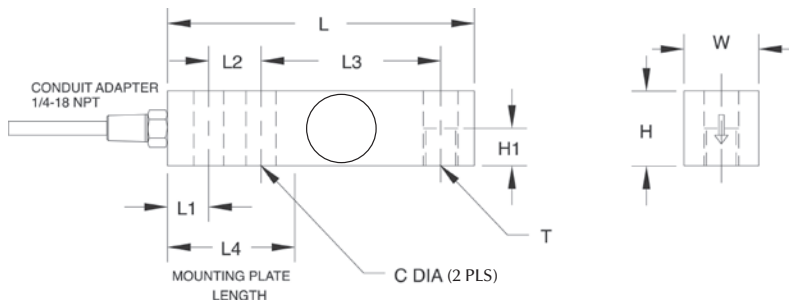
Dimensions

Picture is a representation of actual product

Rated Capacity	C	H	H1	L	L1	L2	L3	L4	T	W
lb/in										
1,000-4,000	0.53	1.22	0.61	5.12	0.62	1.00	3.00	2.25	1/2-20UNF	1.22
5,000-10,000	0.78	1.50	0.75	6.75	0.75	1.50	3.75	3.00	3/4-16UNF	1.50
kg/mm										
453.6-1,814.4	13.5	31.0	15.5	130.0	15.7	25.4	76.2	57.2	1/2-20UNF	31.0
2,268.0-4,535.9	19.8	38.1	19.1	171.5	19.1	38.1	95.3	76.2	3/4-16UNF	38.1

Order Information

Load Rating	Part#	Est. Weight	Price
RL35082 N5/IP67 Model 20 ft			
1,000 lb	453.6 kg	31283	3 lb Consult
2,500 lb	1,134.0 kg	31282	3 lb Consult
4,000 lb	1,814.4 kg	31281	3 lb Consult
5,000 lb	2,268.0 kg	31280	5 lb Consult
10,000 lb	4,535.9 kg	31279	5 lb Consult
RL35082HE N5/IP69K Model 20 ft			
1,000 lb	453.6 kg	34702	3 lb Consult
2,500 lb	1,134.0 kg	34703	3 lb Consult
4,000 lb	1,814.4 kg	34704	3 lb Consult
5,000 lb	2,268.0 kg	34705	5 lb Consult
10,000 lb	4,535.9 kg	34706	5 lb Consult
RL35082HE N5/IP69K Model 30 ft			
1,000 lb	453.6 kg	173854	3 lb Consult
2,500 lb	1,134.0 kg	173856	3 lb Consult
4,000 lb	1,814.4 kg	173857	3 lb Consult
5,000 lb	2,268.0 kg	173858	5 lb Consult
10,000 lb	4,535.9 kg	173859	5 lb Consult



Specifications

Full Scale Output:
2.0 mV/V

Output Resistance:
349-355 ohm

Input Resistance:
343-357 ohm

Material/Finish:
Stainless steel

Temperature:
Compensated range:
14°F to 104°F/-10°C to 40°C
Operating range:
0°F to 150°F/-18°C to 65°C

Seal Type:
Welded-seal, IP67
Hermetic-seal, IP69K
(Conduit is recommended for maximum protection against the ingress of water and moisture through the cable entry)

Safe Overload:
150% Full scale

Safe Sideload:
100% Full scale

Rated Excitation:
5-10 VDC (15 V maximum)

Combined Error:
0.02% Full scale

Non-Repeatability:
0.01% Full scale

Insulation Resistance:
5,000 megohms

Deflection at Capacity:
1,000 lb-4,000 lb = 0.012 in (0.33 mm)
5,000 lb-10,000 lb = 0.030 in (0.81 mm)

Cable Length:
30 ft (9.1 m); 20 ft (6.1 m)

Cable Diameter:
0.220 PTFE coated cable

Conduit Adapter Size:
IP67 1/4-18 NPT
IP69K 1/2-14 NPT

Cable Color Code:
Red +Excitation
Black -Excitation
Green +Signal
White -Signal

Warranty:
Two-year limited warranty

Approvals:
cFMus
NTEP
Waterproof Guaranteed IP69K