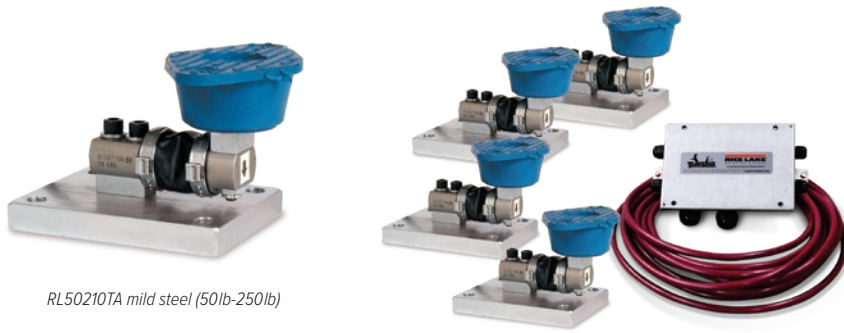


RL50210TA

Mini Tank Weighing Module



RL50210TA mild steel (50lb-250lb)



Picture is a representation of actual product.

Load Cell Approvals



NTEP Certified 1,000lb mild steel load cell shown.

Complete Kit Includes

- Three or four neoprene isolation/compression mounts with NTEP Certified load cells
- 50 to 250 lb mild steel: RL50210
- 500 lb mild steel: RL30000
- 1,000 to 2,500 lb mild steel: RL32018
- 500 lb stainless steel: RL39123
- 1,000 to 2,500 lb stainless steel: RL32018S
- One JB4SS NEMA Type 4X stainless steel signal trim junction box
- 25 ft of hostile environment EL147HE SURVIVOR® load cell cable

Standard Features

- NTEP Certified load cells
- Zinc plated mild steel or stainless steel assemblies
- Weighing ranges from 50 to 2,500 lb per module
- Neoprene isolation mounts allow for minor misalignment, thermal expansion and shock absorption
- Overload stop provides durability

Optional Features

- Stainless steel modules available in 500 lb capacities with RL39123 stainless steel load cells

Applications

- Small tanks and hoppers
- Conveyor/In-motion weighing
- Small platform scales where minor shock loading may occur

WEIGH MODULES

Order Information

Load Rating (Per Module)	Part #	Price
Mild Steel Single Module (Includes Load Cell)		
50 lb	17844	Consult
100 lb	17845	Consult
150 lb	17846	Consult
250 lb	17847	Consult
500 lb	17848	Consult
1,000 lb	17849	Consult
2,000 lb	17948	Consult
2,500 lb	17949	Consult
Mild Steel 3-Module Kit		
50 lb	18051	Consult
100 lb	18052	Consult
150 lb	18053	Consult
250 lb	18054	Consult
500 lb	18055	Consult
1,000 lb	18056	Consult
2,000 lb	30398	Consult
2,500 lb	30396	Consult
Mild Steel 4-Module Kit		
50 lb	18057	Consult
100 lb	18058	Consult
150 lb	18059	Consult
250 lb	18060	Consult
500 lb	18061	Consult
1,000 lb	18062	Consult
2,000 lb	30397	Consult
2,500 lb	30395	Consult

RL50210TA

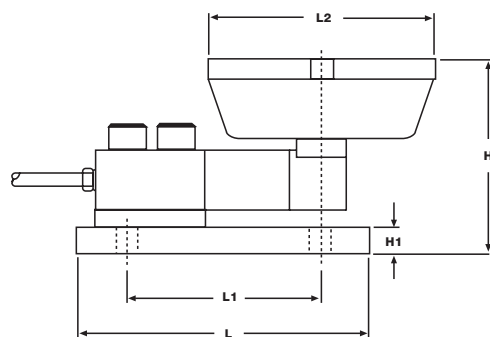
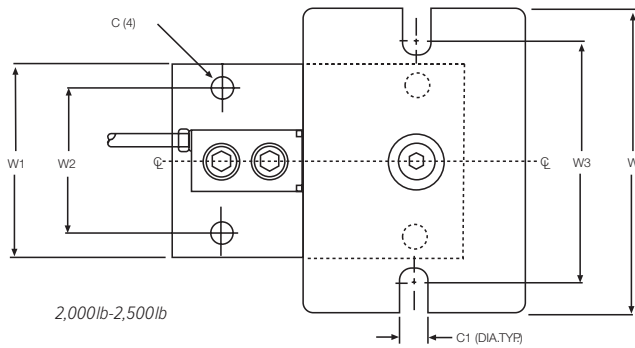
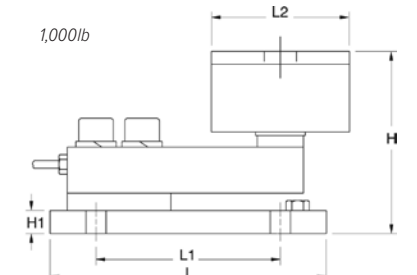
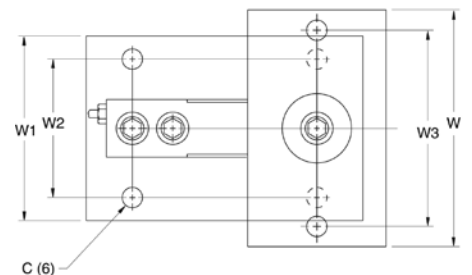
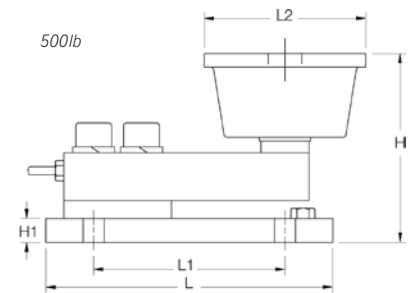
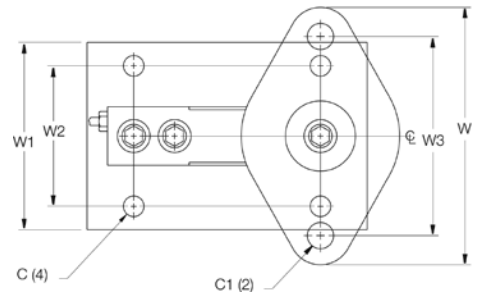
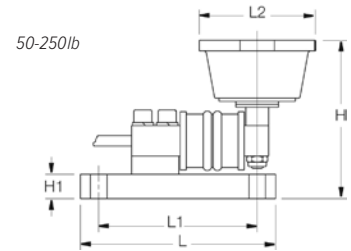
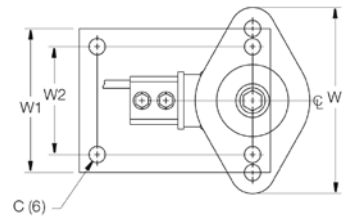
Mini Tank Weighing Module

Order Information

Load Rating (Per Module)	Part #	Price
Stainless Steel Single Module (Includes Load Cell)		
500 lb	17954	Consult
1,000 lb	17955	Consult
2,000 lb	17956	Consult
2,500 lb	17957	Consult
Stainless Steel 3-Module Kit		
500 lb	30394	Consult
1,000 lb	30404	Consult
2,000 lb	30402	Consult
2,500 lb	30400	Consult
Stainless Steel 4-Module Kit		
500 lb	30393	Consult
1,000 lb	30403	Consult
2,000 lb	30401	Consult
2,500 lb	30399	Consult

Dimensions

Rated Capacity	C	C1	H	H1	L	L1	L2	W	W1	W2	W3
lb/in											
50 to 250	0.34	-	3.13	0.50	4.00	3.25	2.38	3.88	3.00	2.25	-
500	0.44	0.56	3.88	0.50	6.00	4.00	3.38	5.50	4.00	3.00	4.13
1,000	0.44	-	4.00	0.50	6.00	4.00	3.00	5.13	4.00	3.00	4.13
2,000 to 2,500	0.44	0.56	4.00	0.50	6.00	4.00	4.62	6.25	4.00	3.00	5.00



WEIGH MODULES