

RL70000 Coated

Alloy Steel, Environmentally Sealed, IP67



Picture is a representation of actual product.

Approvals

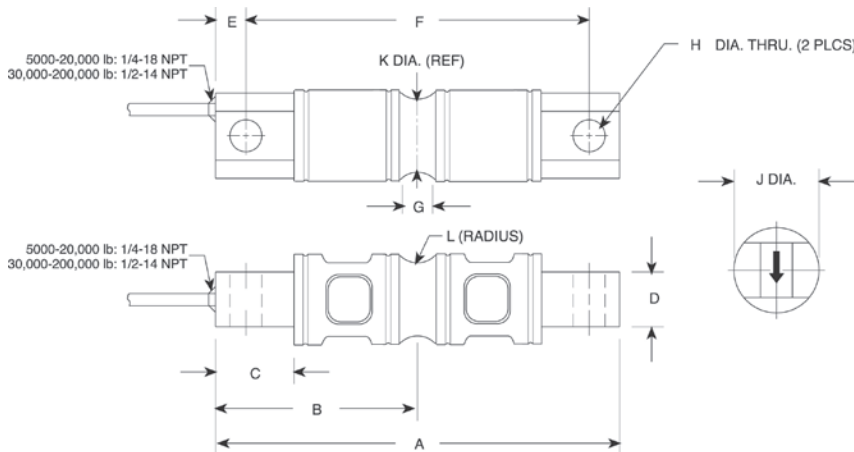


Order Information

Load Rating	Part #	Est. Weight	Price
5,000 lb	198196	5 lb	Consult
30,000 lb	198199	18 lb	Consult
50,000 lb	198201	18 lb	Consult
250,000 lb	198206	93 lb	Consult

Dimensions

Rated Capacity	A	B	C	D	E	F	G	H	J	K	L
lb/in											
5,000	8.12	4.06	1.44	1.12	0.62	6.88	0.62	0.66	1.70	1.48	0.50
30,000 to 50,000	10.25	5.12	1.88	2.37	0.88	8.50	1.00	1.06	3.20	2.73	1.00
250,000	16.10	8.05	3.05	4.60	1.55	13.00	1.30	1.56	5.38	5.17	2.00



RICE LAKE LOAD CELLS

Interchangeable Products

- RICE LAKE WEIGHING SYSTEMS
RL70000*.....page 141
- RICE LAKE WEIGHING SYSTEMS
RL72020*.....page 137
- RICE LAKE WEIGHING SYSTEMS
RL72020P.....page 139

Weigh Module Available

- RICE LAKE WEIGHING SYSTEMS
EZ Mount 1.....page 74

*Cells are uncoated

Specifications

Full Scale Output:
3.0 mV/V

Output Resistance:
5 to 10 k: 703 (± 4) ohm
20 to 150 k: 700 (± 5) ohm
200 to 250 k: 700 (± 5) ohm

Input Resistance:
5 to 10 k: 700 (± 14) ohm
20 to 150 k: 770 (± 10) ohm
200 to 250 k: 700 (± 14) ohm

Material/Finish:
Alloy steel, coated

Temperature:
Compensated range
14 °F to 104 °F (-10 °C to 40 °C)
Operating range
0 °F to 150 °F (-18 °C to 65 °C)

Seal Type:
Environmentally sealed, IP67

Safe Overload:
150% full scale

Safe Sideload:
100% full scale

Rated Excitation:
5 to 10 VDC (15 V maximum)

Combined Error:
0.02% full scale

Insulation Resistance:
5,000 megohm

Deflection at Capacity:
5,000 lb: 0.02 in
10,000 lb: 0.025 in
20,000 lb: 0.042 in
30,000 to 50,000 lb: 0.02 in
60,000 lb: 0.025 in
100,000 lb: 0.02 in

Cable Length:
30 ft

Cable Diameter:
5,000 to 20,000 lb: 0.200 in
30,000 to 250,000 lb: 0.305 in
Polyurethane jacket

Cable Color Code:
Red +Excitation
Black -Excitation
Green +Signal
White -Signal

Warranty:
Two-year limited

Approvals:
cFMus
NTEP 97-125