

Discontinued
Limited Stock Available



Picture is a representation of actual product.

Approvals

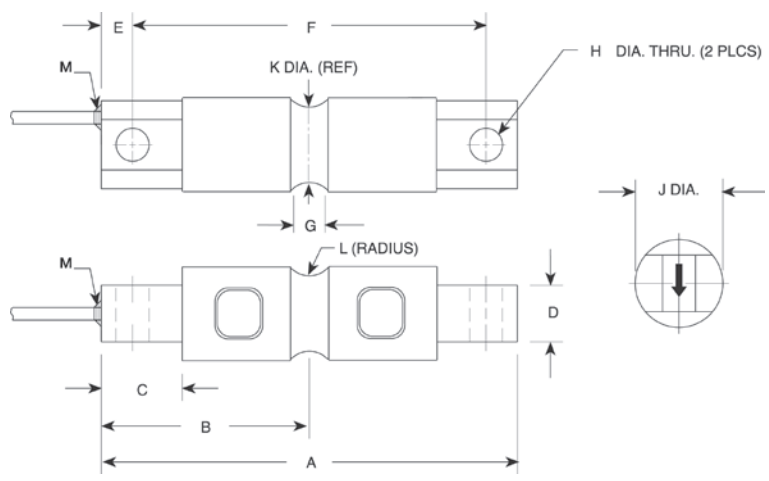


Order Information

Load Rating	Part #	Est. Weight	Price
NTEP Certified			
40,000 lb	30435	22 lb	Consult
50,000 lb	30436	22 lb	Consult
100,000 lb	30444	30 lb	Consult
Non-NTEP Certified			
5,000 lb	30431	5 lb	Consult

Dimensions

Rated Capacity	A	B	C	D	E	F	G	H	J	K	L	M
lb/in												
5,000	8.12	4.06	1.44	1.12	0.62	6.88	0.62	0.66	1.70	1.48	0.50	1/4-18 NPT
40,000 to 50,000	10.25	5.12	1.88	2.37	0.88	8.50	1.00	1.06	3.20	2.73	1.00	1/2-14 NPT
100,000	11.25	5.62	1.88	2.50	0.88	9.50	1.00	1.06	3.50	3.24	1.50	1/2-14 NPT



Interchangeable Products

- RICE LAKE WEIGHING SYSTEMS
RL72019SS.....page 140
- RICE LAKE WEIGHING SYSTEMS
RL72020SS.....page 138
- VPG® REVERE
9103.....page 272
- METTLER TOLEDO®
SLD-530

Weigh Module Available

- RICE LAKE WEIGHING SYSTEMS
EZ Mount 1.....page 74

Specifications

- Full Scale Output:**
3.0 mV/V
- Output Resistance:**
700 (± 7) ohm
- Input Resistance:**
700 (± 7) ohm
- Material/Finish:**
Stainless steel
- Temperature:**
Compensated range
0 °F to 150 °F (-18 °C to 65 °C)
Operating range
0 °F to 150 °F (-18 °C to 65 °C)
- Seal Type:**
Environmentally sealed, IP67
- Safe Overload:**
150% full scale
- Safe Sideload:**
100% full scale
- Rated Excitation:**
5 to 10 VDC (15 V max)
- Non-repeatability:**
0.02% full scale
- Combined Error:**
0.3% full scale
- Insulation Resistance:**
5,000 megohm
- Deflection at Capacity:**
5,000 lb: 0.02 in
10,000 lb: 0.025 in
20,000 lb: 0.042 in
30,000 to 50,000 lb: 0.02 in
60,000 lb: 0.025 in
100,000 to 150,000 lb: 0.02 in
- Cable Length:**
30 ft
- Cable Diameter:**
0.295 in
Polyurethane jacket
- Cable Color Code:**
Red +Excitation
Black -Excitation
Green +Signal
White -Signal
- Warranty:**
Two-year limited
- Approvals:**
cFMus
NTEP 12-050

**RICE LAKE
LOAD CELLS**