

# RL72020 MLC Coated

Alloy Steel, Environmentally Sealed, NTEP Certified 1:5,000 Class III/1:10,000 Class IIIIL Multiple Cell, IP67



Picture is a representation of actual product.

### Approvals

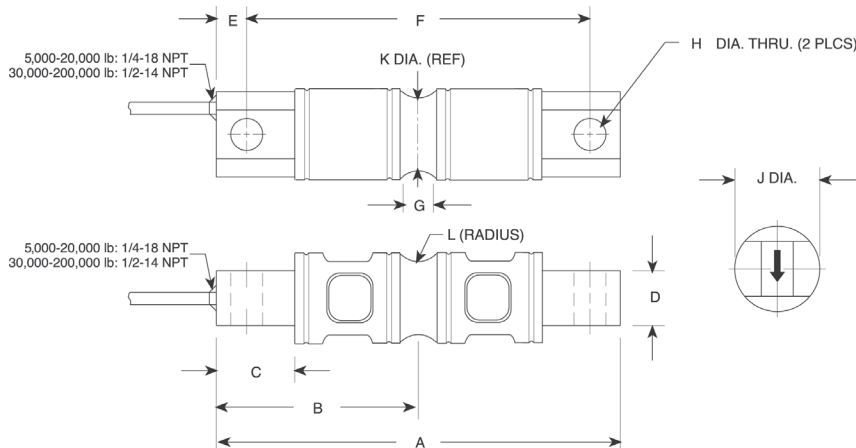


### Order Information

Load Rating	Part #	Est. Weight	Price
<b>NTEP</b>			
5,000 lb	201769	5 lb	Consult
10,000 lb	201770	6 lb	Consult
20,000 lb	201771	7 lb	Consult
30,000 lb	201772	18 lb	Consult
40,000 lb	201773	18 lb	Consult
50,000 lb	201774	18 lb	Consult
60,000 lb	201775	18 lb	Consult
100,000 lb	201776	28 lb	Consult
150,000 lb	201777	34 lb	Consult
200,000 lb	201778	90 lb	Consult
<b>Non-NTEP</b>			
250,000 lb	201779	93 lb	Consult

### Dimensions

Rated Capacity	A	B	C	D	E	F	G	H	J	K	L
lb/in											
5,000 to 10,000	8.12	4.06	1.44	1.12	0.62	6.88	0.62	0.66	1.70	1.48	0.50
20,000	8.12	4.06	1.44	1.12	0.62	6.88	0.84	0.66	1.95	1.48	0.50
30,000 to 60,000	10.25	5.12	1.88	2.37	0.88	8.50	1.00	1.06	3.20	2.73	1.00
100,000	11.25	5.62	1.88	2.50	0.88	9.50	1.00	1.06	3.50	3.24	1.50
150,000	11.25	5.62	1.88	2.80	0.88	9.50	1.25	1.06	3.90	3.64	1.50
200,000 to 250,000	16.10	8.05	3.05	4.60	1.55	13.00	1.30	1.56	5.38	5.17	2.00



### Interchangeable Products

VPG® REVERE

**5103\*** ..... page 255

ARTECH®

**70210**

METTLER TOLEDO®

**SLD 430**

*\*Cells are uncoated*

### Weigh Module Available

RICE LAKE WEIGHING SYSTEMS

**EZ Mount 1**..... page 68

### Specifications

#### Full Scale Output:

3.0 mV/V

#### Output Resistance:

5 to 10 k: 703 (± 4) ohm  
 20 to 150 k: 700 (± 5) ohm  
 200 to 250 k: 700 (± 5) ohm

#### Input Resistance:

5 to 10 k: 700 (± 14) ohm  
 20 to 150 k: 770 (± 10) ohm  
 200 to 250 k: 700 (± 14) ohm

#### Material/Finish:

Alloy steel, coated

#### Temperature:

Compensated:  
 14 °F to 104 °F (-10 °C to 40 °C)  
 Operating:  
 0 °F to 150 °F (-18 °C to 65 °C)

#### Seal Type:

Environmentally sealed, IP67

#### Safe Overload:

150% full scale

#### Safe Sideload:

100% full scale

#### Rated Excitation:

5 to 10 VDC (15 V maximum)

#### Combined Error:

0.02% full scale

#### Insulation Resistance:

5,000 megohm

#### Deflection at Capacity:

5,000 lb: 0.02 in  
 10,000 lb: 0.025 in  
 20,000 lb: 0.042 in  
 30,000 to 50,000 lb: 0.02 in  
 60,000 lb: 0.025 in  
 100,000 lb: 0.02 in

#### Cable Length:

30 ft

#### Cable Diameter:

5,000 to 20,000 lb: 0.200 in  
 30,000 to 250,000 lb: 0.305 in  
 Polyurethane jacket

#### Cable Color Code:

Red +Excitation  
 Black -Excitation  
 Green +Signal  
 White -Signal

#### Warranty:

Two-year limited

#### Approvals:

cFMus  
 NTEP 21-064