

DOUBLE-ENDED BEAM  
**RL72020SS**

Stainless Steel, Environmentally Sealed, NTEP Certified 1:5,000 Class III/1:10,000 Class IIIIL Multiple Cell, IP67



Picture is a representation of actual product.

Approvals

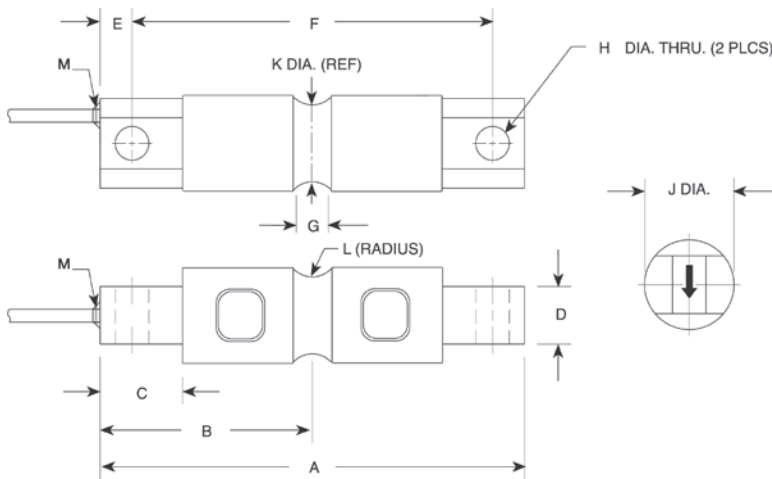


Order Information

Load Rating	Part #	Est. Weight	Price
<b>NTEP Certified</b>			
10,000 lb	<b>201781</b>	5 lb	Consult
20,000 lb	<b>201782</b>	5 lb	Consult
30,000 lb	<b>201783</b>	20 lb	Consult
40,000 lb	<b>201784</b>	20 lb	Consult
50,000 lb	<b>201785</b>	20 lb	Consult
60,000 lb	<b>201786</b>	20 lb	Consult
100,000 lb	<b>201787</b>	30 lb	Consult
<b>Non-NTEP Certified</b>			
5,000 lb	<b>201780</b>	5 lb	Consult
150,000 lb	<b>201788</b>	30 lb	Consult

Dimensions

Rated Capacity	A	B	C	D	E	F	G	H	J	K	L	M
lb/in												
5,000 to 10,000	8.12	4.06	1.44	1.12	0.62	6.88	0.62	0.66	1.70	1.48	0.50	1/4-18 NPT
20,000	8.12	4.06	1.44	1.12	0.62	6.88	0.84	0.66	1.95	1.48	0.50	1/4-18 NPT
30,000 to 60,000	10.25	5.12	1.88	2.37	0.88	8.50	1.00	1.06	3.20	2.73	1.00	1/2-14 NPT
100,000	11.25	5.62	1.88	2.50	0.88	9.50	1.00	1.06	3.50	3.24	1.50	1/2-14 NPT
150,000	11.25	5.62	1.88	2.80	0.88	9.50	1.25	1.06	3.90	3.64	1.50	1/2-14 NPT



Interchangeable Products

- RICE LAKE WEIGHING SYSTEMS  
**RL70000SS** .....page 143
- VPG® REVERSE  
**9103**.....page 272

Weigh Module Available

- RICE LAKE WEIGHING SYSTEMS  
**EZ Mount 1 SS** .....page 76

Specifications

- Full Scale Output:**  
3.0 mV/V
- Output Resistance:**  
700 (± 5) ohm
- Input Resistance:**  
700 (± 10) ohm
- Material/Finish:**  
Stainless steel
- Temperature:**  
Operating range  
14 °F to 104 °F (-10 °C to 40 °C)
- Seal Type:**  
Environmentally sealed, IP67
- Safe Overload:**  
150% full scale
- Rated Excitation:**  
5 to 10 VDC
- Combined Error:**  
0.02% full scale
- Insulation Resistance:**  
5,000 megohm
- Cable Length:**  
30 ft polyurethane jacket
- Cable Color Code:**  
Red +Excitation  
Black -Excitation  
Green +Signal  
White -Signal
- Warranty:**  
Two-year limited
- Approvals:**  
NTEP 21-064  
cFMus

RICE LAKE  
LOAD CELLS