

Limited Stock Available

# DOUBLE-ENDED BEAM RL75016WHE

Stainless Steel, Hermetically Sealed, IP69K



Picture is a representation of actual product.

## Approvals

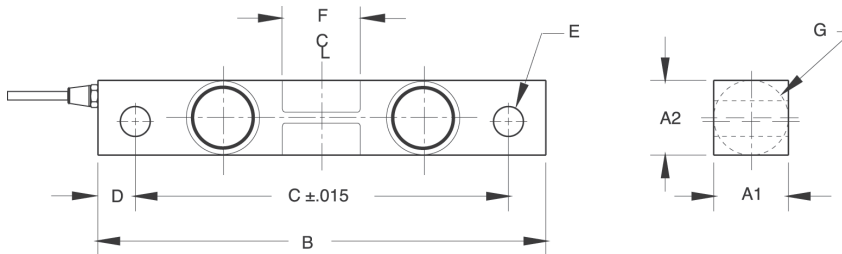


## Order Information

Load Rating	Part #	Est. Weight	Price
1,000 lb	67043	4 lb	Consult
1,500 lb	67044	4 lb	Consult
2,000 lb	67045	4 lb	Consult
2,500 lb	67046	4 lb	Consult
5,000 lb	67047	4 lb	Consult
10,000 lb	67048	7 lb	Consult
15,000 lb	67049	7 lb	Consult
20,000 lb	67050	7 lb	Consult
25,000 lb	67051	7 lb	Consult

## Dimensions

Rated Capacity	A1	A2	B	C	D	E	F	G	CONDUIT ADAPTER
lb/in									
1,000 to 5,000	1.22	1.22	7.50	6.25	0.62	0.50	1.12	1.25	1/2-14 NPT
10,000 to 25,000	1.44	1.94	8.75	7.50	0.62	0.81	1.62	1.99	1/2-14 NPT



## Interchangeable Products

RICE LAKE WEIGHING SYSTEMS	
<b>RL77032SS HE</b> .....	page 132
RICE LAKE WEIGHING SYSTEMS	
<b>RL75016SS*</b> .....	page 135
RICE LAKE WEIGHING SYSTEMS	
<b>RL75016SS-W*</b> .....	page 136
VPG® SENSORTRONICS®	
<b>65016W*</b> .....	page 291
VPG SENSORTRONICS	
<b>65016WH</b> .....	page 292

## Weigh Module Available

RICE LAKE WEIGHING SYSTEMS	
<b>RL1600 Series</b> .....	page 73

\*Welded seal

## Specifications

- Full Scale Output:** 3.0 mV/V
- Output Resistance:** 699 to 707 ohm
- Input Resistance:** 686 to 714 ohm
- Material/Finish:** Stainless steel
- Temperature:** Operating range 0 °F to 150 °F (-18 °C to 65 °C)
- Seal Type:** Hermetically sealed, IP69K
- Safe Overload:** 150% full scale
- Safe Sideload:** 100% full scale
- Rated Excitation:** 5 to 10 VDC (15 V maximum)
- Insulation Resistance:** 2,000 megohm
- Cable Length:** 25 ft
- Cable Diameter:** 0.200 in Polyurethane jacket
- Cable Color Code:** Red +Excitation  
Black -Excitation  
Green +Signal  
White -Signal
- Warranty:** Two-year limited
- Approvals:** cFMus

RICE LAKE  
LOAD CELLS