



Picture is a representation of actual product.

Approvals



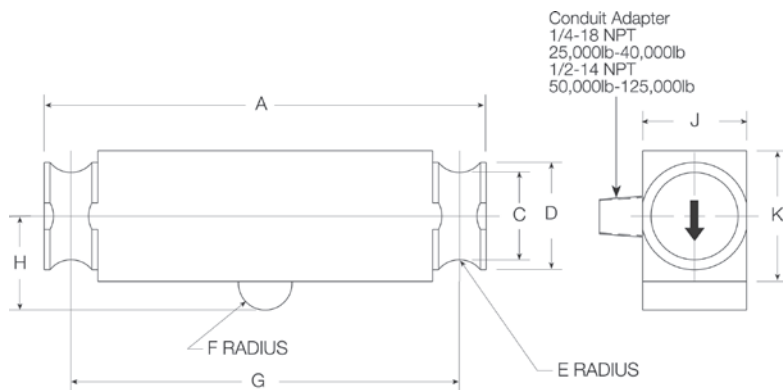
Order Information

Load Rating	Part #	Est. Weight	Price
35 ft Cable			
25,000 lb	21614	11 lb	Consult
40,000 lb	21615	12 lb	Consult
50,000 lb LE	21616	17 lb	Consult
60,000 lb LE	21617	17 lb	Consult
75,000 lb	21618	17 lb	Consult
100,000 lb	21619	40 lb	Consult
125,000 lb	21620	40 lb	Consult
40 ft Cable			
50,000 lb SE	87253	11 lb	Consult
60,000 lb SE	53593	11 lb	Consult
50 ft Cable			
50,000 lb LE	21621	18 lb	Consult
60,000 lb LE	21622	18 lb	Consult
75,000 lb	40951	18 lb	Consult

SE=small envelope; LE=large envelope

Dimensions

Rated Capacity	A	C	D	E	F	G	H	J	K
lb/in									
25,000 to 60,000 SE	8.25	1.63	2.00	0.50	0.50	7.25	1.75	1.94	2.44
50,000 LE to 75,000	11.50	1.70	2.20	0.75	1.00	10.00	2.00	1.94	2.94
100,000 to 125,000	14.50	2.44	3.20	1.00	1.50	12.50	2.75	2.90	3.86



Interchangeable Products

- VPG® SENSORTRONICS®
- 65040A**page 312
- ARTECH®
- 80310**
- THURMAN®
- TSC 840**
- SENTRAN
- WD1**
- ANYLOAD
- 102TH**

Weigh Module Available

- RICE LAKE WEIGHING SYSTEMS
- Translink™**page 87

Specifications

- Full Scale Output:**
3.0 mV/V
- Output Resistance:**
700 (± 5) ohm
- Input Resistance:**
770 (± 10) ohm
- Material/Finish:**
High-alloy steel, nickel plated
- Temperature:**
Compensated range
14 °F to 104 °F (-10 °C to 40 °C)
Operating range
0 °F to 150 °F (-18 °C to 65 °C)
- Seal Type:**
Environmentally sealed, IP67
- Safe Overload:**
150% full scale
- Safe Sideload:**
100% full scale
- Rated Excitation:**
5 to 10 VDC (15 V maximum)
- Combined Error:**
0.03% full scale
- Insulation Resistance:**
1,000 megohm
- Cable Length:**
35 ft
40 ft
50 ft
- Cable Diameter:**
25,000 lb: 0.200 in
40,000 to 75,000 lb: 0.305 in polyurethane jacket
- Cable Coloring Code:**
Red +Excitation
Black -Excitation
Green +Signal
White -Signal
- Warranty:**
Two-year limited
- Approvals:**
cFMus
NTEP 00-027

**RICE LAKE
LOAD CELLS**