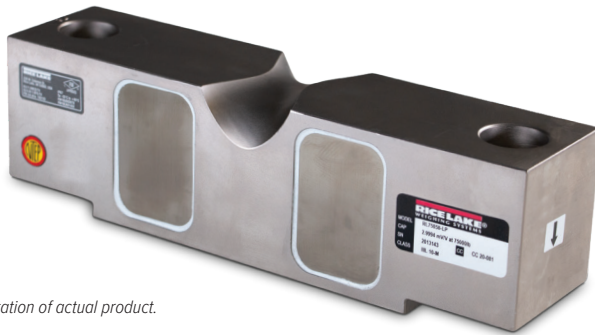




Alloy Steel, Environmentally Sealed, NTEP Certified 1:10,000 Class IIIIL Multiple Cell, IP67

DOUBLE-ENDED BEAM RL75058-LP



Picture is a representation of actual product.

Approvals



Order Information

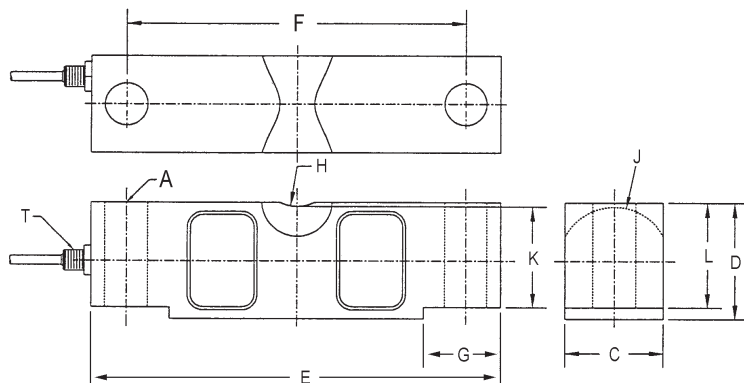
Load Rating	Part #	Est. Weight	Price
NTEP Certified 35 ft Cable			
20,000 lb	197770	8 lb	Consult
25,000 lb	197771	8 lb	Consult
40,000 lb	197772	13 lb	Consult
50,000 lb	197773	19 lb	Consult
60,000 lb	197774	19 lb	Consult
75,000 lb	197775	19 lb	Consult
100,000 lb	197776	40 lb	Consult
125,000 lb	197777	40 lb	Consult
Non-NTEP Certified 35 ft Cable			
10,000 lb	197769	8 lb	Consult
NTEP Certified 60 ft Cable			
50,000 lb	197778	20 lb	Consult
75,000 lb**	197781	20 lb	Consult
75,000 lb*	197782	20 lb	Consult
125,000 lb	197779	40 lb	Consult
NTEP Certified 100 ft Cable			
75,000 lb	197780	22 lb	Consult

*Stainless steel overbraided cable

**Used in Rice Lake truck scales

Dimensions

Rated Capacity	A	C	D	E	F	G	H	J	K	L	T
lb/in											
10,000 to 25,000	0.68	1.69	1.94	7.75	6.50	1.38	0.75	0.90	1.63	1.70	1/4-18 NPT
40,000	0.81	1.94	2.44	10.25	8.50	1.93	1.00	1.12	2.00	2.10	1/4-18 NPT
50,000 to 75,000	1.06	2.44	2.94	10.25	8.50	1.93	1.00	1.37	2.54	2.65	1/2-14 NPT
100,000 to 125,000	1.62	2.90	3.86	15.25	12.75	3.13	1.50	1.80	3.30	3.43	1/2-14 NPT



Interchangeable Products

- VPG® SENSORTRONICS®
65058A page 293
- VPG® CELTRON®
CLB page 196
- ARTECH®
70210
- ARTECH®
70310

Weigh Module Available

- RICE LAKE WEIGHING SYSTEMS
RL2100HE page 36
- RICE LAKE WEIGHING SYSTEMS
MVS page 77

Specifications

- Full Scale Output:**
3.0 mV/V
- Output Resistance:**
700 (± 5) ohm
- Input Resistance:**
770 (± 10) ohm
- Material/Finish:**
High-alloy steel, nickel plated
- Temperature:**
Compensated:
14 °F to 104 °F (-10 °C to 40 °C)
Operating:
0 °F to 150 °F (-18 °C to 65 °C)
- Seal Type:**
Environmentally sealed, IP67
- Safe Overload:**
150% full scale
- Safe Sideload:**
100% full scale
- Rated Excitation:**
5 to 10 VDC (15 V maximum)
- Combined Error:**
0.02% full scale
- Insulation Resistance:**
5,000 megohm
- Cable Length:**
35 ft
60 ft
100 ft
- Cable Diameter:**
10,000 to 25,000 lb: 0.200 in
40,000 to 125,000 lb: 0.305 in
Polyurethane jacket
- Cable Color Code:**
Red +Excitation
Black -Excitation
Green +Signal
White -Signal
- Warranty:**
Two-year limited
- Approvals:**
cFMus
NTEP 20-081

RICE LAKE
LOAD CELLS