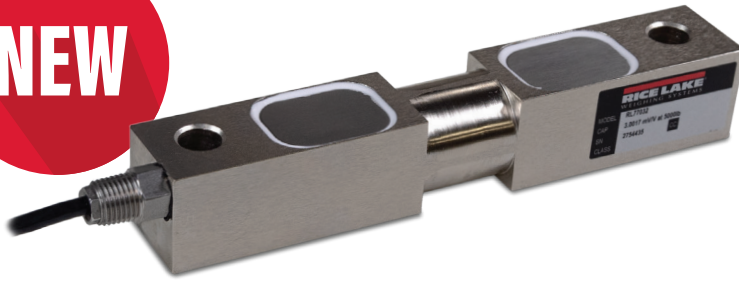


# RL77032

Alloy Steel, Environmentally Sealed, IP67



Picture is a representation of actual product.

### Approvals

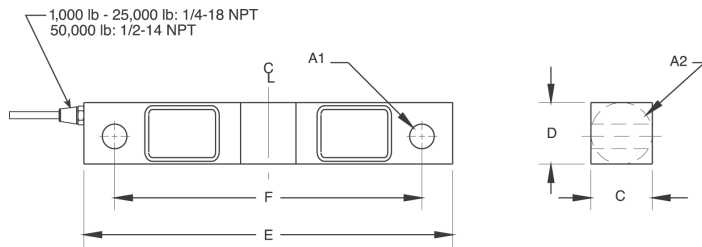


### Order Information

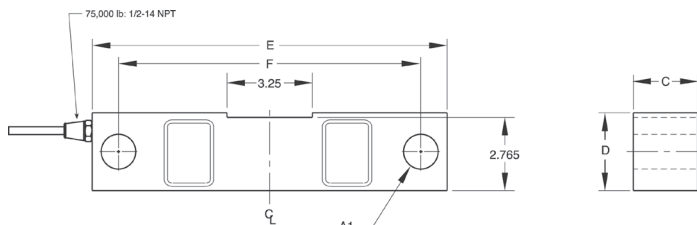
Load Rating	Part #	Est. Weight	Price
1,000 lb	221536	4 lb	Consult
1,500 lb	221537	4 lb	Consult
2,000 lb	221538	4 lb	Consult
2,500 lb	221539	4 lb	Consult
3,000 lb	221540	4 lb	Consult
5,000 lb	221541	4 lb	Consult
10,000 lb	221542	7 lb	Consult
15,000 lb	221543	7 lb	Consult
20,000 lb	221544	7 lb	Consult
25,000 lb	221545	7 lb	Consult
50,000 lb	221546	25 lb	Consult
75,000 lb	221547	27 lb	Consult

### Dimensions

Rated Capacity lb/in	A1	A2	C	D	E	F
1,000 to 50,000	0.50	1.25	1.25	1.25	7.50	6.25
10,000 to 25,000	0.81	1.99	1.44	1.94	8.75	7.50
50,000	1.31	3.00	2.44	2.94	13.50	11.50
75,000	1.31	-	2.44	2.94	13.50	11.50



1,000 to 50,000lb



75,000lb

### Interchangeable Products

- RICE LAKE WEIGHING SYSTEMS  
**RL75016** ..... page 133
- VPG® SENSORTRONICS®  
**65016** ..... page 290

### Weigh Module Available

- RICE LAKE WEIGHING SYSTEMS  
**RL1600 Series** ..... page 72

### Specifications

- Full Scale Output:**  
3.0 mV/V
- Output Resistance:**  
700 (± 5) ohm
- Input Resistance:**  
770 (± 10) ohm
- Material/Finish:**  
High-alloy steel, nickel plated
- Temperature:**  
Operating:  
0 °F to 150 °F (-18 °C to 65 °C)
- Seal Type:**  
Environmentally sealed, IP67
- Safe Overload:**  
150% full scale
- Safe Sideload:**  
100% full scale
- Rated Excitation:**  
5 to 10 VDC
- Nonlinearity:**  
0.03% full scale
- Hysteresis:**  
0.02% full scale
- Deflection at Capacity:**  
1,000 to 2,500 lb: 0.01 in  
5,000 lb: 0.015 in  
10,000 to 20,000 lb: 0.022 in  
25,000 lb: 0.036 in  
50,000 lb: 0.052 in  
75,000 lb: 0.07 in
- Insulation Resistance:**  
5,000 megohm
- Cable Length:**  
25 ft  
Polyurethane jacket
- Cable Color Code:**  
Red +Excitation  
Black -Excitation  
Green +Signal  
White -Signal
- Warranty:**  
Two-year limited
- Approvals:**  
cFMus

RICE LAKE  
LOAD CELLS