



Picture is a representation of actual product.

**Approvals**

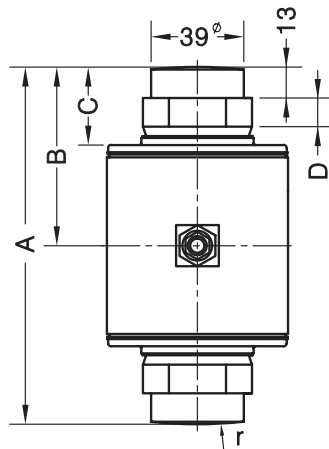


**Order Information**

| Load Rating   | Part #        | Est. Weight | Price   |
|---------------|---------------|-------------|---------|
| 30,000 lb     | <b>221271</b> | 8 lb        | Consult |
| 40,000 lb     | <b>207495</b> | 8 lb        | Consult |
| Load Cup Kits |               |             |         |
| 30,000 lb     | <b>223356</b> | 7.50 lb     | Consult |
| 40,000 lb     | <b>223357</b> | 7.94 lb     | Consult |

**Dimensions**

| Rated Capacity | A    | B    | C    | D    | Ball r |
|----------------|------|------|------|------|--------|
| lb/in          |      |      |      |      |        |
| 30,000         | 5.51 | 2.76 | 1.10 | 0.28 | 7.09   |
| 40,000         | 5.91 | 2.95 | 1.30 | 0.47 | 7.87   |



**Specifications**

**Full Scale Output:**  
2.0 mV/V

**Output Resistance:**  
1,005 (± 5) ohm

**Input Resistance:**  
1,150 (± 50) ohm

**Material/Finish:**  
Stainless steel

**Temperature:**  
Compensated:  
14 °F to 104 °F (-10 °C to 40 °C)  
Operating:  
0 °F to 150 °F (-18 °C to 65 °C)

**Seal Type:**  
Hermetically sealer, IP69K

**Safe Overload:**  
120% full scale

**Rated Excitation:**  
5 to 10 VDC

**Combined Error:**  
0.013% full scale

**Non-repeatability:**  
0.01% full scale

**Insulation Resistance:**  
5,000 megohm

**Deflection at Capacity:**  
0.621 mm

**Cable Length:**  
18 m overbraid cable

**Cable Color Code:**  
Green +Excitation  
Black -Excitation  
Red +Signal  
White -Signal  
Blue +Sense  
Yellow -Sense

**Warranty:**  
Two-year limited

**Approvals:**  
NTEP

**RICE LAKE  
LOAD CELLS**