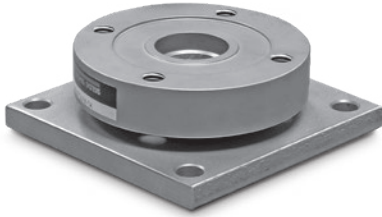


# RL9000TWM Series



## Part Number/Price

Ref#	Part#	Description	Price
<b>Load Cell</b>			
1	99997	1,000 lb	Consult
1	99998	2,500 lb	Consult
1	99999	5,000 lb	Consult
1	100000	10,000 lb	Consult
1	100001	15,000 lb	Consult
1	100002	20,000 lb	Consult
1	100003	25,000 lb	Consult
1	100004	35,000 lb	Consult
1	100005	50,000 lb	Consult
1	100006	60,000 lb	Consult
1	100007	75,000 lb	Consult
1	100008	100,000 lb	Consult
1	100009	150,000 lb	Consult
1	100010	200,000 lb	Consult
1	100074	250,000 lb	Consult
1	100075	300,000 lb	Consult
1	100076	400,000 lb	Consult
1	100078	450,000 lb	Consult
<b>Center Bolt and O-Ring</b>			
2	121257	1,000 lb to 15,000 lb	Consult
2	121258	20,000 lb to 50,000 lb	Consult
2	121259	60,000 lb to 100,000 lb	Consult
2	121260	150,000 lb to 200,000 lb	Consult
2	121261	250,000 lb to 450,000 lb	Consult
<b>Washer</b>			
3	121262	1,000 lb to 15,000 lb	Consult
3	121263	20,000 lb to 50,000 lb	Consult
3	121264	60,000 lb to 100,000 lb	Consult
3	121265	150,000 lb to 200,000 lb	Consult
3	121266	250,000 lb to 450,000 lb	Consult
<b>Center Bolt Removal Tool</b>			
	151637	20,000 lb to 50,000 lb	Consult
	151638	60,000 lb to 100,000 lb	Consult
	151639	150,000 lb to 200,000 lb	Consult
	161935	250,000 lb to 450,000 lb	Consult

15,000 lb bolt can be removed with 5/16 inch allen wrench  
 Contact factory for base plate pricing

