

Picture is a representation of actual product.

Standard Features

- Capacities (per module): 250 to 5,000 lb SE
- Zinc plated, mild steel construction or stainless steel construction
- Self-checking, multi-directional movement
- Design incorporates a ball and cup for self-centering
- Will accommodate a standard shear beam 250 to 5,000 lb SE load cell that has a threaded load hole such as the RL30000, RL39123, RL32018, RL32018S, RL32218S-HE

Applications

- Light- to medium-capacity tanks and hoppers
- Conveyors

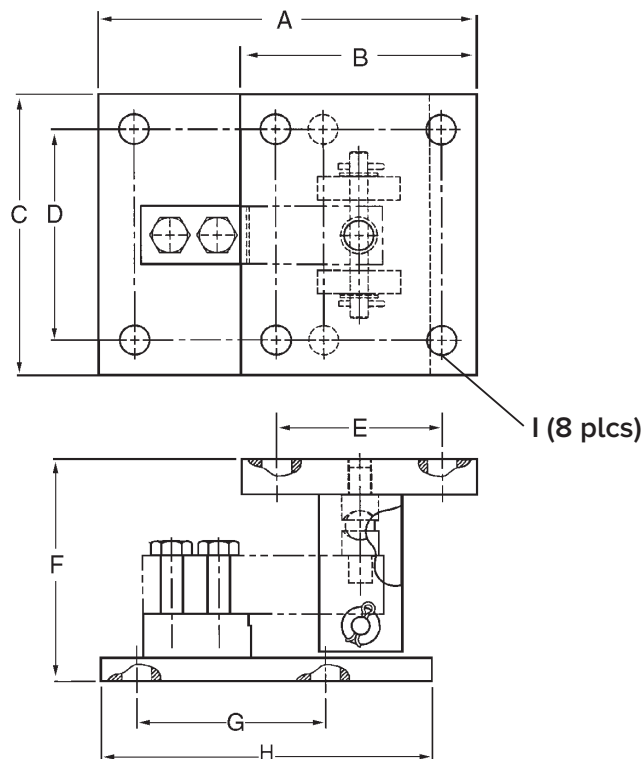
Order Information

Load Rating (Per Module)	Part #	Price
Single Module Mild Steel		
250 to 5,000 lb SE	53059	Consult
Single Module Stainless Steel		
250 to 5,000 lb SE	53066	Consult

Dimensions

Rated Capacity	A	B	C	D	E	F	G	H	I
lb/in									
250 to 5,000 SE	8.00	5.00	6.00	4.50	3.50	4.75	4.00	7.00	0.63

SE refers to small envelope



WEIGH MODULES