

RLHBB

Stainless Steel, Hermetically Sealed, NTEP Certified 1:4,000 Class III Single Cell 1:5,000 Class III Multiple Cell, OIML C3, IP68

**DISCONTINUED
LIMITED STOCK
AVAILABLE**



APPROVALS



Interchangeable Products

RICE LAKE WEIGHING SYSTEMS	
RL9018SS	page 138
HBM®	
Z6 (non-NTEP)	page 262
VPG REVERE®	
SHB	page 289
VPG TEDEA-HUNTLEIGH®	
355	page 347
CARDINAL®	
CB6**	—
METTLER-TOLEDO®	
MTB Model 777	—
** Not interchangeable with 500 kg	

Weigh Module Available

RICE LAKE WEIGHING SYSTEMS	
RL1700HE Series	page 38

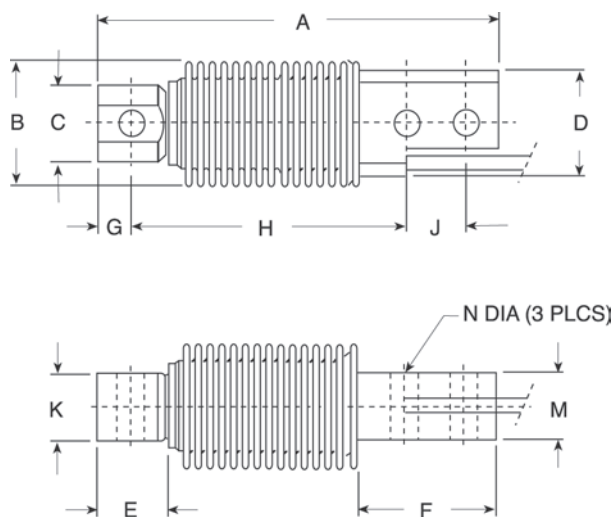
Dimensions

Picture is a representation of actual product

Rated Capacity	A	B	C	D	E	F	G	H	J	K	M	N
kg/mm												
5-500	120.0	40.0	23.0	32.0	20.5	45.5	10.0	82.0	18.0	20.0	20.0	8.20
lb/in												
11.0-1,102.3	4.72	1.61	0.91	1.26	0.81	1.79	0.39	3.23	0.71	0.79	0.79	0.32

Order Information

Load Rating	Part#	Est. Weight	Price
NTEP Certified			
250 kg	41119	2 lb	Consult
OIML			
5 kg	32678	2 lb	Consult
50 kg	31260	2 lb	Consult
200 kg	31262	2 lb	Consult
250 kg	31263	2 lb	Consult



Specifications

- Full Scale Output:**
2.0 mV/V
- Output Resistance:**
355 (± 5) ohm
- Input Resistance:**
380 (± 10) ohm
- Material/Finish:**
Stainless steel
- Temperature:**
Compensated range:
14°F to 104°F/-10°C to 40°C
Operating range:
0°F to 150°F/-18°C to 65°C
- Seal Type:**
Hermetically sealed, IP68
- Safe Overload:**
150% full scale
- Rated Excitation:**
5-10 VDC (15V maximum)
- Combined Error:**
0.02% full scale
- Insulation Resistance:**
2,000 megohms
- Deflection at Capacity:**
5 kg-500 kg=0.4 mm (0.015 in)
- Cable Length:**
3 m (9.8 ft)
- Cable Diameter:**
0.220 polyurethane jacket
- Cable Color Code:**
Blue +Excitation
Black -Excitation
White +Signal
Red -Signal
Green +Sense
Grey -Sense

Warranty:
Two-year limited warranty

Approvals:
cFMus
NTEP
OIML