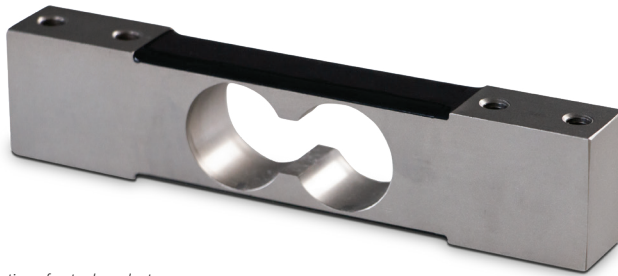


SINGLE POINT
RLPC3SS

Stainless Steel, Environmentally Sealed, NTEP Certified 1:3,000 Class III Single Cell, IP67



Picture is a representation of actual product.

Approvals

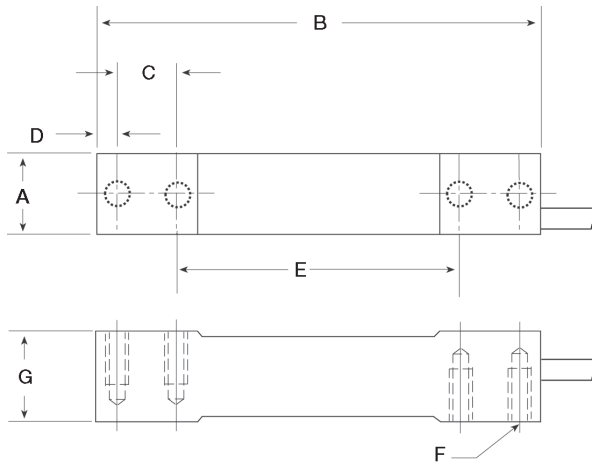


Order Information

Load Rating	Part #	Est. Weight	Price
7 kg	205274	2 lb	Consult
10 kg	205275	2 lb	Consult
30 kg	205276	2 lb	Consult
60 kg	205277	2 lb	Consult
100 kg	205278	2 lb	Consult
150 kg	205279	2 lb	Consult

Dimensions

Rated Capacity	A	B	C	D	E	F	G
kg/mm							
7 to 10	19.0	139.8	19.0	6.6	88.7	M6 × 1.0	30.0
30 to 60	23.8	139.8	19.0	6.6	88.7	M6 × 1.0	30.0
100 to 150	30.7	139.7	22.4	6.6	79.3	3/8-16 UNC	30.0



Interchangeable Products

RICE LAKE WEIGHING SYSTEMS	
RL1380	page 166
FLINTEC®	
PC3	page 216
HBK®	
PWS	page 231

Specifications

- Full Scale Output:**
2 mV/V
- Output Resistance:**
350 (± 10) ohm
- Input Resistance:**
385 (± 15) ohm
- Material/Finish:**
Stainless steel
- Temperature:**
Compensated:
14 °F to 104 °F (-10 °C to 40 °C)
Operating:
0 °F to 150 °F (-18 °C to 65 °C)
- Seal Type:**
Environmentally sealed, IP67
- Safe Overload:**
150% full scale
- Rated Excitation:**
5 to 10 VDC
- Combined Error:**
0.02% full scale
- Insulation Resistance:**
5,000 megohm
- Cable Length:**
10 ft
- Cable Diameter:**
0.140 in
Polyurethane jacket
- Cable Color Code:**
Green +Excitation
Black -Excitation
White +Signal
Red -Signal
Yellow Shield
- Max Platform Size:**
7 kg to 30 kg: 350 × 350 mm
60 kg to 150 kg: 450 × 450 mm
- Warranty:**
One-year limited
- Approvals:**
NTEP 21-017
OIML R60/2017-A-NL1-21.17

RICE LAKE
LOAD CELLS