



Picture is a representation of actual product.

Approvals

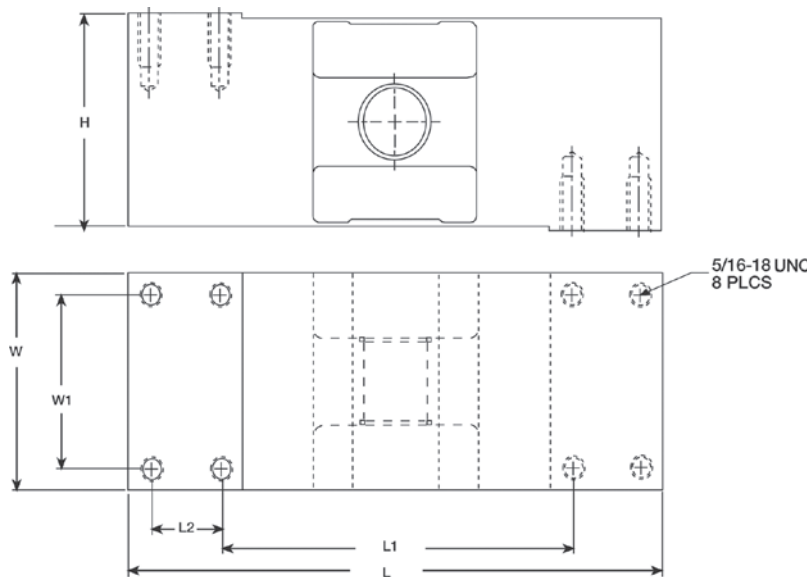


Order Information

Load Rating	Part #	Est. Weight	Price
50 kg	87022	12 lb	Consult
100 kg	87023	12 lb	Consult
250 kg	87024	13 lb	Consult
500 kg	87025	13 lb	Consult
1,000 kg	87026	15 lb	Consult

Dimensions

Rated Capacity	L	L1	L2	W	W1	H
kg/mm						
50 to 1,000	190.5	107.0	35.0	73.7	50.0	73.7



Specifications

Full Scale Output:
2 mv/v

Output Resistance:
960 (± 50) ohm

Input Resistance:
1,100 (± 50) ohm

Material/Finish:
Stainless steel

Temperature:
Compensated range
14 °F to 104 °F (-10 °C to 40 °C)
Operating range
0 °F to 150 °F (-18 °C to 65 °C)

Seal Type:
Hermetically sealed, IP69K

Safe Overload:
200% full scale

Safe Sideload:
100% full scale

Rated Excitation:
5 to 10 VDC

Combined Error:
0.020% full scale

Insulation Resistance:
5,000 megohm

Cable Length:
10 ft

Cable Diameter:
0.196 in
Polyurethane jacket

Cable Color Code:
Green +Excitation
Black -Excitation
White +Signal
Red -Signal
Blue +Sense
Brown -Sense
Yellow Shield

Max Platform Size:
24 × 24 in

Warranty:
Two-year limited

Approvals:
FM
NTEP 07-094

**RICE LAKE
LOAD CELLS**