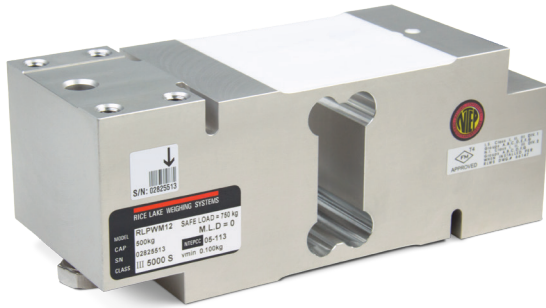


Limited Stock Available

SINGLE POINT
RLPWM12

Aluminum, Environmentally Sealed, NTEP Certified 1:5,000 Class III Single Cell, IP67



Picture is a representation of actual product.

Approvals

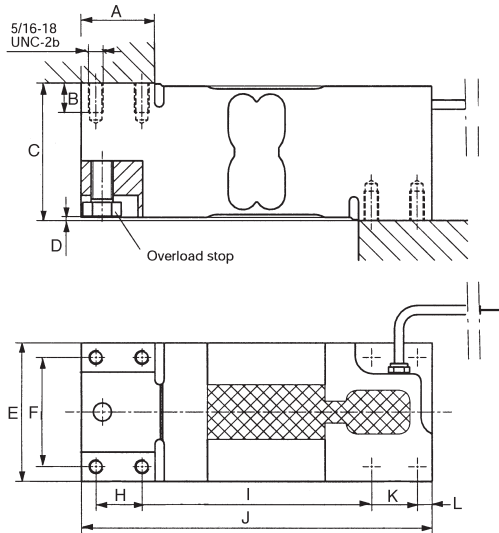


Order Information

Load Rating	Part #	Est. Weight	Price
500 kg	91681	6 lb	Consult
1,000 kg	91683	6 lb	Consult

Dimensions

Rated Capacity	A	B	C	D	E	F	H	I	J	K	L
kg/mm											
500 to 1,000	40.0	16.0	75.0	1.5	76.0	60.0	25.0	125.0	191.0	25.0	8.0



Interchangeable Products

VPG® TEDEA-HUNTLEIGH®
1250 page 322

Specifications

- Full Scale Output:**
2.0 mV/V
- Output Resistance:**
330 to 450 ohm, nominal
- Input Resistance:**
300 to 500 ohm
- Material/Finish:**
Aluminum
- Temperature:**
Compensated:
14 °F to 104 °F (-10 °C to 40 °C)
Operating:
0 °F to 150 °F (-18 °C to 65 °C)
- Seal Type:**
Environmentally sealed, IP67
- Safe Overload:**
150% full scale
- Rated Excitation:**
5 to 10 VDC (15 V maximum)
- Combined Error:**
0.02% full scale
- Insulation Resistance:**
1,000 megohm
- Cable Length:**
10 ft
- Cable Diameter:**
0.190 in PVC jacket
- Cable Color Code:**
Green +Excitation
Black -Excitation
Red +Signal
White -Signal
Blue +Sense
Brown -Sense
- Max Platform Size:**
30 × 30 in
- Warranty:**
Two-year limited
- Approvals:**
FM
NTEP 05-113

**RICE LAKE
LOAD CELLS**