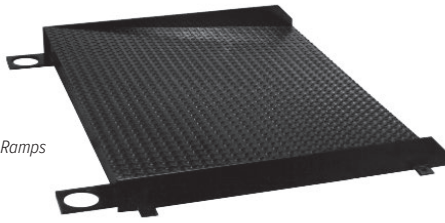
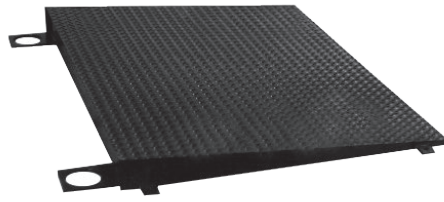


RoughDeck® Access Ramps



RoughDeck Access Ramps with Side Rails



RoughDeck Access Ramps without Side Rails

FLOOR SCALES

RoughDeck Access Ramps

Part # with Side Rails	Part # without Side Rails	Size (W × L × H)	Ramp Angle of Incline	Est. Weight	Price
RoughDeck HP: 1,000 to 10,000 lb (diamond treadplate standard)					
69040*	224097	2.5 ft × 3 ft × 3.5 in	5.3°	115 lb	Consult
69041*	224099	3 ft × 3 ft × 3.5 in	5.3°	133 lb	Consult
69042*	224100	4 ft × 3 ft × 3.5 in	5.3°	177 lb	Consult
69043*	224101	5 ft × 3 ft × 3.5 in	5.3°	226 lb	Consult
69184	224102	2.5 ft × 4 ft × 3.5 in	3.9°	152 lb	Consult
69185	224103	3 ft × 4 ft × 3.5 in	3.9°	177 lb	Consult
69186	224104	4 ft × 4 ft × 3.5 in	3.9°	224 lb	Consult
69187	224105	5 ft × 4 ft × 3.5 in	3.9°	272 lb	Consult
RoughDeck HP-H: 20,000 lb (diamond treadplate standard)					
69204	224106	4 ft × 4 ft × 4 in	4.4°	487 lb	Consult
69205	224107	5 ft × 4 ft × 4 in	4.4°	591 lb	Consult
69206	224108	6 ft × 4 ft × 4 in	4.4°	689 lb	Consult
69207	224109	7 ft × 4 ft × 4 in	4.4°	822 lb	Consult
69208	224110	8 ft × 4 ft × 4 in	4.4°	1005 lb	Consult
RoughDeck HP-H: 30,000 lb (diamond treadplate standard)					
69210	224111	4 ft × 5 ft × 5 in	4.4°	666 lb	Consult
69211	224112	5 ft × 5 ft × 5 in	4.4°	806 lb	Consult
69212	224113	6 ft × 5 ft × 5 in	4.4°	942 lb	Consult
69213	224114	7 ft × 5 ft × 5 in	4.4°	1116 lb	Consult
69214	224115	8 ft × 5 ft × 5 in	4.4°	1337 lb	Consult
RoughDeck SS and HE: 1,000 to 10,000 lb (diamond treadplate standard)					
69178*	224116	2.5 ft × 3 ft × 3.5 in	5.3°	115 lb	Consult
69179*	224117	3 ft × 3 ft × 3.5 in	5.3°	133 lb	Consult
69180*	224118	4 ft × 3 ft × 3.5 in	5.3°	177 lb	Consult
69189	224119	2.5 ft × 4 ft × 3.5 in	3.9°	152 lb	Consult
69190	224120	3 ft × 4 ft × 3.5 in	3.9°	177 lb	Consult
69191	224121	4 ft × 4 ft × 3.5 in	3.9°	224 lb	Consult
69192	224122	5 ft × 4 ft × 3.5 in	3.9°	272 lb	Consult

* Not recommended for use with pallet jacks

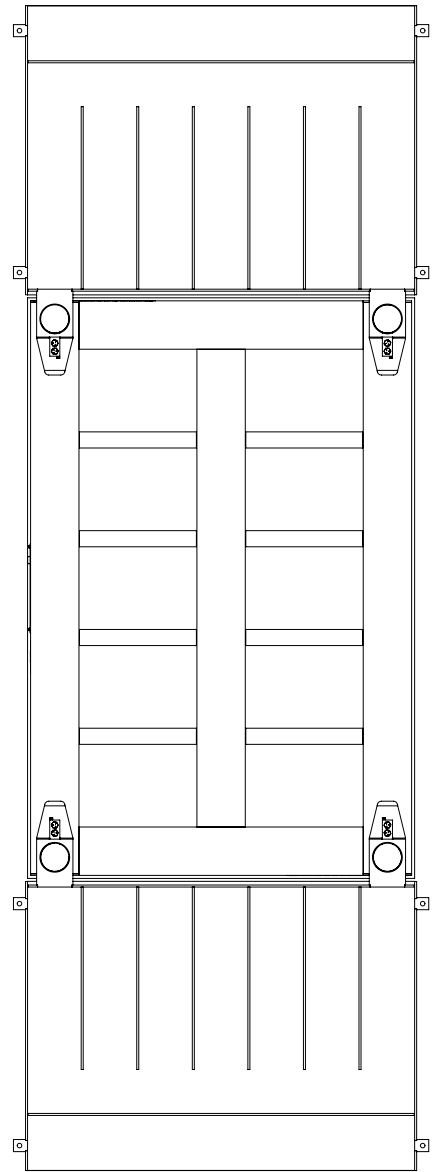
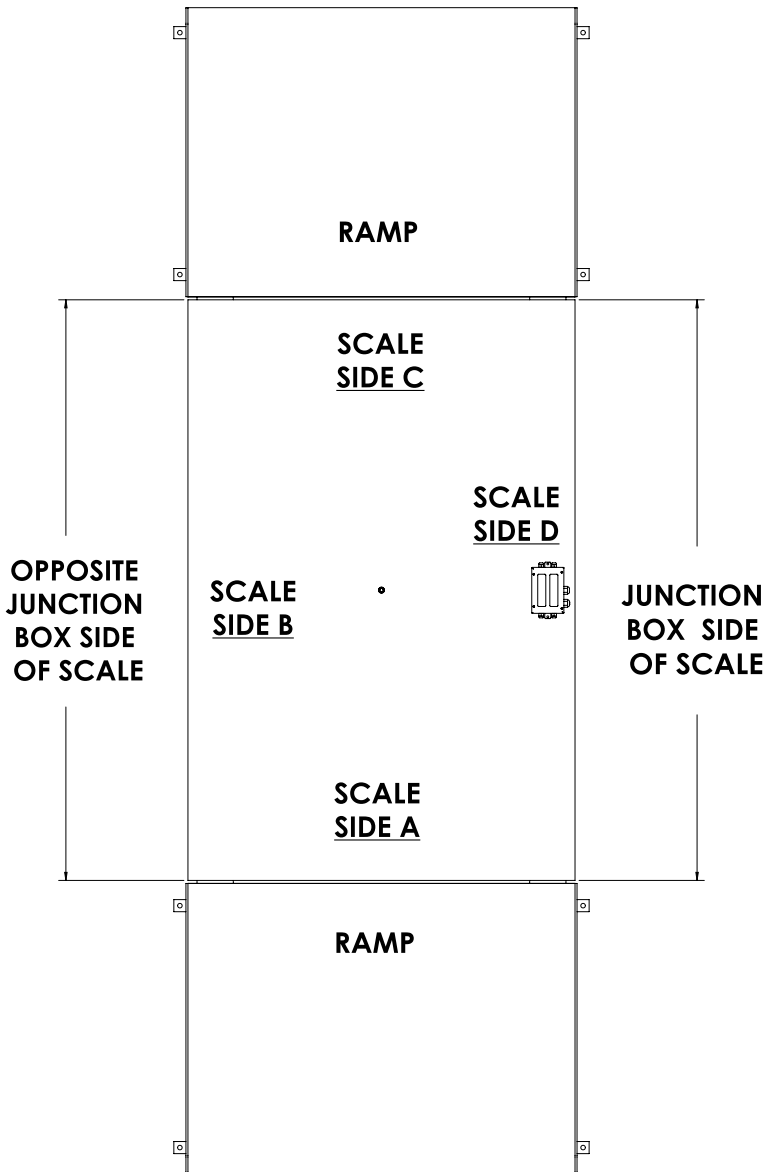
NOTE: Part numbered ramps are designed to fit scale on sides perpendicular to junction box. The junction box is always on longest side of scale unless specified differently.

NOTE: Part numbered ramps are designed to fit scale sides A or C; if you need a ramp to fit scale side B or D, please refer to page 391. Please request a quote for a special ramp.

Options/Accessories

Part #	Description	Price
Consult	Epoxy paint	Consult list price add-on

RoughDeck® Access Ramps



Underdeck View

FLOOR SCALES

Part numbered ramps are designed to fit scale sides A or C; if you need a ramp to fit scale side B or D, please request a quote for a special ramp.

The junction box is always on the longest side of the scale unless specified differently.