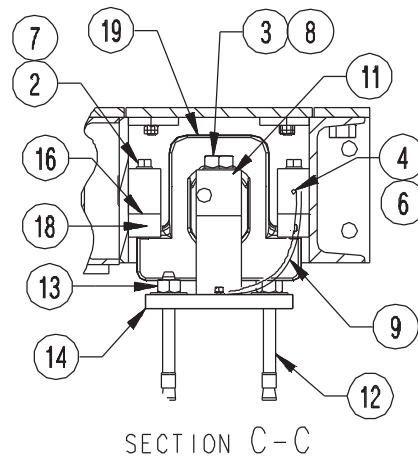
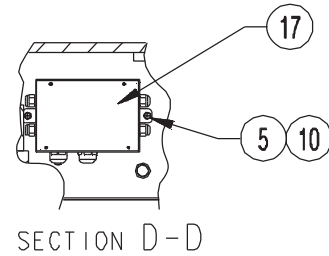
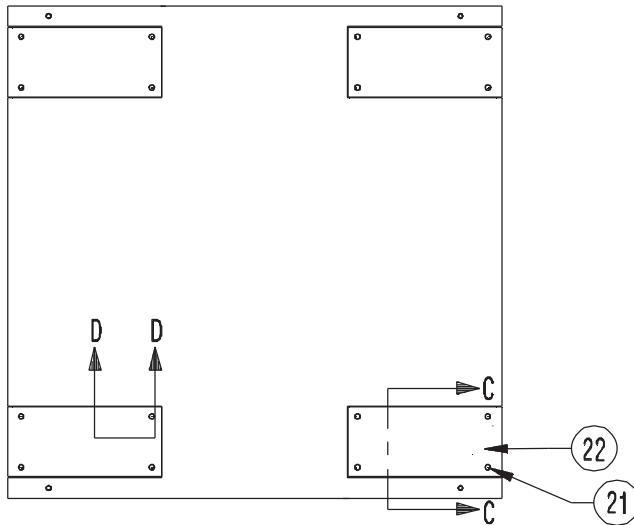


**Part Number/Price**

Ref#	Part#	Description	Price
2	14765	Bolt, 1/2 - 13 NC x 4 in, LG hex head	Consult
3	37888	Bolt, 1 - 12 NC x 4 in, hex head	Consult
4	14886	Machine screw 1/4 in - 28 UNF x 1/2 LG	Consult
5	15139	Lockwasher # 10	Consult
6	15147	Washer, lock 1/4 in regular	Consult
7	15167	Washer, lock 1/2 in regular	Consult
8	15184	Washer, 1 in plain	Consult
9	17778	Ground strap, 12 in	Consult
10	21974	Mach screw, 10 - 32 NF x 5/8 in LG panhead	Consult
11	34317	Load cell, RL75058-50 k (for 40,000 lb or 60,000 lb scale)	Consult
11	34319	Load cell, RL75058-75 k (for 80,000 lb scale)	Consult
12	41973	Concrete anchor	Consult
13	43413	Nut, 3/4 - 10 NC heavy hex	Consult
14	108504	Base Wldt, 75 k capacity	Consult
16	67294	Shim plate, 1/8 in	Consult
17	107700	J-box TuffSeal, SST	Consult
18	107412	Mount load plate	Consult
19	108503	Rocker link, machined 75 k	Consult
20	67291	Shim plate, 1/16 in	Consult
21	15058	Screw 1/2 - 13 NC x 1 - 1/2 flat head SST	Consult
22	108398	Load cell, pocket cover	Consult
	15611	Cable, EL147HE 20 ft	Consult



(See Diagram RoughDeck-CS)



**LOAD CELL OPTION:**  
 40K & 60K USE (4 EA.) PART #34317  
 80K USE (4 EA.) PART #34319

RoughDeck-CS