

Standard Features

- Heavy-duty industrial design
- Structural steel channel frame
- Four NTEP Certified alloy steel, shear beam load cells
- 20 ft SURVIVOR® EL147HE hostile environment load cell cable
- Side-access junction box
- Rugged diamond deck safety treadplate
- 4 adjustable stainless steel SUREFOOT™ support feet
- 4 corner overload stops (Canadian versions only)
- Level bubble (Canadian versions only)

Specifications

End Load Capacity:

- 200% full scale at 1,000 lb
- 100% full scale at 2,000 lb, and 5,000 lb
- 80% full scale at 10,000 lb

Cable Length:

- 20 ft (6.1 m) for connecting junction box to indicator

Junction Box:

- TuffSeal® JB4SS stainless steel, NEMA Type 4X junction box with signal trim card

Welding:

- Stitch

Threaded Eyebolt:

- Hole (1/2-20 NF) located in center of deck for easy lifting

Warranty (limited):

- Weldment: Five-year
- Load cells: Two-year
- All other components: One-year

Approvals:

- NTEP CC 92-001, Class III 5,000d
- Measurement Canada AM-4827, Class III 5,000d

Approvals



Measurement
Canada
Approved



Part Number/Price

Part #	Part #	Size (W × L × H)	Capacity	Est. Weight	Price
With Quick Connector	Without Quick Connector				
66318 [†]	67695	2.5 ft × 2.5 ft × 3.5 in	2,000 lb	173 lb	Consult
66320 [†]	67693	3 ft × 3 ft × 3.5 in	1,000 lb	232 lb	Consult
66317 [†]	67696	3 ft × 3 ft × 3.5 in	2,000 lb	232 lb	Consult
105300 [†]	105301	3 ft × 3 ft × 3.5 in	5,000 lb	232 lb	Consult
66319	67694	4 ft × 4 ft × 3.5 in	1,000 lb	375 lb	Consult
67618	67697	4 ft × 4 ft × 3.5 in	2,000 lb	375 lb	Consult
66316	67698	4 ft × 4 ft × 3.5 in	5,000 lb	375 lb	Consult
66315	67699	4 ft × 4 ft × 3.5 in	10,000 lb	375 lb	Consult
66314	67700	4 ft × 5 ft × 3.5 in	5,000 lb	437 lb	Consult
66313	67701	4 ft × 5 ft × 3.5 in	10,000 lb	567 lb	Consult
66312	67702	4 ft × 6 ft × 3.5 in	5,000 lb	510 lb	Consult
66311	67703	4 ft × 6 ft × 3.5 in	10,000 lb	656 lb	Consult
66310	67704	5 ft × 5 ft × 3.5 in	5,000 lb	541 lb	Consult
66309	67705	5 ft × 5 ft × 3.5 in	10,000 lb	696 lb	Consult
66308	67706	5 ft × 6 ft × 3.5 in	5,000 lb	646 lb	Consult
66307	67707	5 ft × 6 ft × 3.5 in	10,000 lb	821 lb	Consult
66306	67708	5 ft × 7 ft × 3.5 in	5,000 lb	734 lb	Consult
66305	67709	5 ft × 7 ft × 3.5 in	10,000 lb	929 lb	Consult
Canadian Weights and Measures Approved					
191928 [†]	191930	2.5 ft × 2.5 ft × 3.5 in	1,000 kg	173 lb	Consult
191949 [†]	191950	3 ft × 3 ft × 3.5 in	500 kg	232 lb	Consult
66464 [†]	67710	3 ft × 3 ft × 3.5 in	1,000 kg	232 lb	Consult
191931 [†]	191932	3 ft × 3 ft × 3.5 in	2,500 kg	232 lb	Consult
191951	191952	4 ft × 4 ft × 3.5 in	500 kg	375 lb	Consult
191933	191934	4 ft × 4 ft × 3.5 in	1,000 kg	375 lb	Consult
66465	67711	4 ft × 4 ft × 3.5 in	2,500 kg	375 lb	Consult
66466	67712	4 ft × 4 ft × 3.5 in	5,000 kg	375 lb	Consult
191935	191936	4 ft × 5 ft × 3.5 in	2,500 kg	437 lb	Consult
191937	191938	4 ft × 5 ft × 3.5 in	5,000 kg	567 lb	Consult
191939	191940	4 ft × 6 ft × 3.5 in	2,500 kg	510 lb	Consult
191941	191942	4 ft × 6 ft × 3.5 in	5,000 kg	656 lb	Consult
66467	67713	5 ft × 5 ft × 3.5 in	2,500 kg	541 lb	Consult
66468	67714	5 ft × 5 ft × 3.5 in	5,000 kg	696 lb	Consult
191943	191944	5 ft × 6 ft × 3.5 in	2,500 kg	646 lb	Consult
191945	191946	5 ft × 6 ft × 3.5 in	5,000 kg	821 lb	Consult
66469	67715	5 ft × 7 ft × 3.5 in	2,500 kg	934 lb	Consult
66470	67716	5 ft × 7 ft × 3.5 in	5,000 kg	929 lb	Consult

[†] Not recommended for use with pallet jacks

RoughDeck® HP

High Performance Structural Steel Low-profile Floor Scale

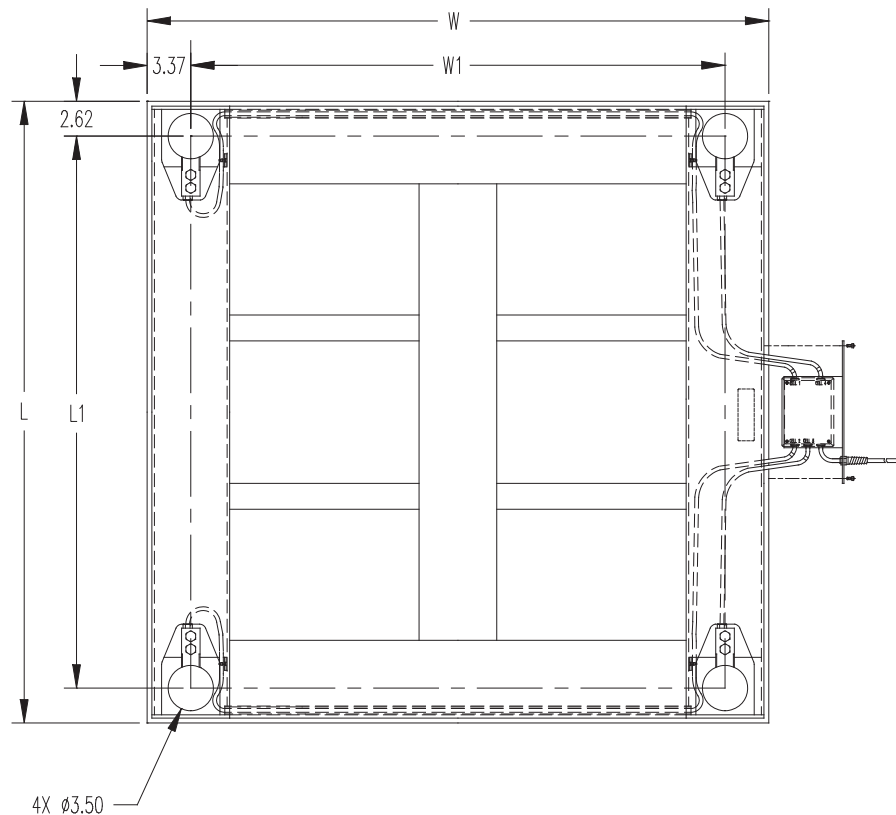
Options/Accessories

Part #	Description	Price
Consult	Access ramps available	See catalog page 390
Consult	Pit frames available	See catalog page 393
Consult	Bumper guards available	See catalog page 396 through catalog page 398
Consult	Portability frames available	See catalog page 399 through catalog page 404
Consult	Smooth deck instead of diamond safety treadplate	N/C
Consult	Four drilled deck holes for scale height adjustment	Consult
18777	Floor anchor plates, mild steel (set of 2)	Consult
19352	Floor stand for indicator, 36.3 in high, mild steel	Consult
126384	Floor stand for indicator, 48 in high, mild steel	Consult
Consult	Mild steel deck with RL32018S IP66 stainless steel cFMus approved load cells and hardware	Consult
Consult	Mild steel deck with RL32218S-HE hermetically sealed IP69K stainless steel cFMus approved load cells and hardware	Consult
Consult	Epoxy paint	Consult
Consult	Top-access junction box	Consult
Consult	Forklift channel option (up to 7 × 5 ft 10,000 lb, accommodates fork tines no larger than (W × H) 5 × 2 in, fork entry is on opposite side of junction box location)	Consult

Dimensions

Length	L1	W	W1	H
30.00 in	24.75 in	30.00 in	23.25 in	3.50 in
36.00 in	30.75 in	36.00 in	29.25 in	3.50 in
48.00 in	42.75 in	48.00 in	41.25 in	3.50 in
60.00 in	54.75 in	48.00 in	41.25 in	3.50 in
72.00 in	66.75 in	48.00 in	41.25 in	3.50 in
60.00 in	54.75 in	60.00 in	53.25 in	3.50 in
72.00 in	66.75 in	60.00 in	53.25 in	3.50 in
84.00 in	78.75 in	60.00 in	53.25 in	3.50 in

Note: 1 in=25.4 mm.



FLOOR SCALES