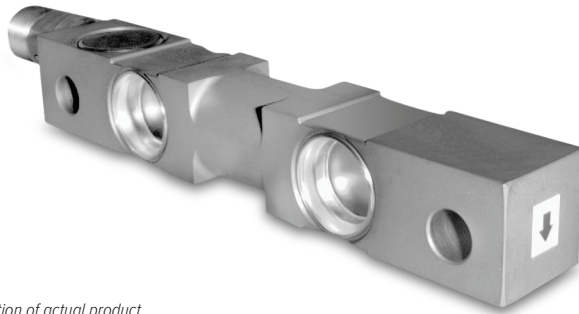


65016WH

Stainless Steel, Hermetically Sealed, IP68



Picture is a representation of actual product

Approvals

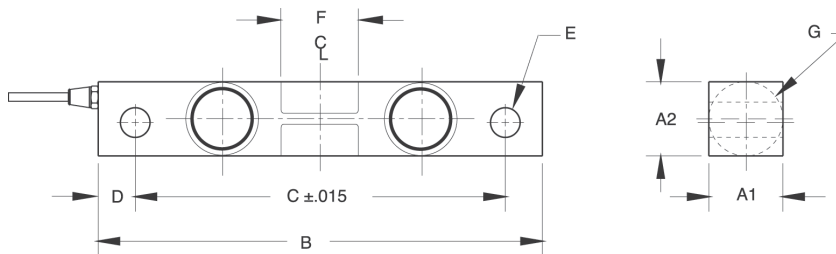


Order Information

Load Rating	Part #	Est. Weight	Price
1,000 lb	65827	4 lb	Consult
1,500 lb	65828	4 lb	Consult
2,000 lb	65829	4 lb	Consult
2,500 lb	65830	4 lb	Consult
5,000 lb	65831	4 lb	Consult
10,000 lb	65832	7 lb	Consult
15,000 lb	65833	7 lb	Consult
20,000 lb	65834	7 lb	Consult
25,000 lb	65835	7 lb	Consult

Dimensions

Rated Capacity	A1	A2	B	C	D	E	F	G	CONDUIT ADAPTER
lb/in									
1,000 to 5,000	1.22	1.22	7.50	6.25	0.62	0.50	1.12	1.25	1/2-14 NPT
10,000 to 25,000	1.44	1.94	8.75	7.50	0.62	0.81	1.62	1.99	1/2-14 NPT



Interchangeable Products

- RICE LAKE WEIGHING SYSTEMS
RL77032SS HE..... page 132
- RICE LAKE WEIGHING SYSTEMS
RL75016WHE..... page 137
- RICE LAKE WEIGHING SYSTEMS
RL75016SS*..... page 135
- VPG® SENSORTRONICS®
65016W*..... page 291

*Welded-seal

Weigh Module Available

- RICE LAKE WEIGHING SYSTEMS
RL1600 Series... page 75 and page 76

Specifications

- Full Scale Output:**
3.0 mV/V nominal
- Output Resistance:**
699 to 707 ohm
- Input Resistance:**
686 to 714 ohm
- Material/Finish:**
Stainless steel
- Temperature:**
Operating:
0 °F to 150 °F (-18 °C to 65 °C)
- Seal Type:**
Hermetically sealed, IP68
- Safe Overload:**
150% full scale
- Safe Sideload:**
100% full scale
- Rated Excitation:**
5 to 10 VDC (15 V maximum)
- Nonlinearity:**
0.03% full scale
- Hysteresis:**
0.02% full scale
- Insulation Resistance:**
5,000 megohm
- Cable Length:**
25 ft
- Cable Diameter:**
0.200 in
Polyurethane jacket
- Cable Color Code:**
Red +Excitation
Black -Excitation
Green +Signal
White -Signal
- Warranty:**
One-year limited
- Approvals:**
cFMus