

Picture is a representation of actual product

Approvals



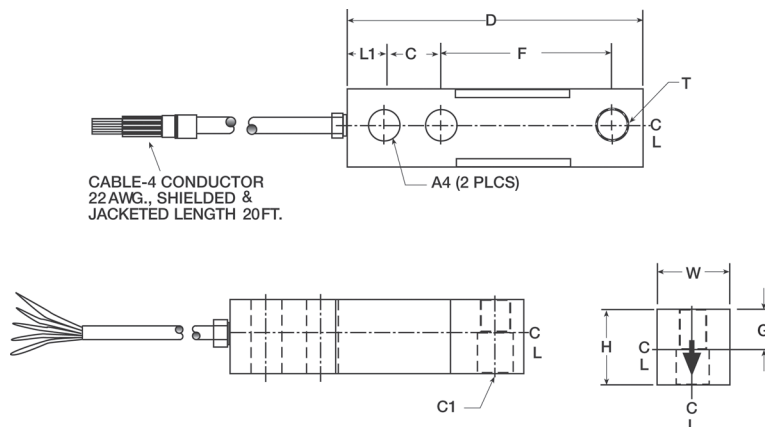
Order Information

Load Rating	Part #	Est. Weight	Price
NTEP Certified			
1,000 lb	21507	3 lb	Consult
1,500 lb	69832	3 lb	Consult
2,000 lb	21508	3 lb	Consult
2,500 lb	21509	3 lb	Consult
3,000 lb	21510	3 lb	Consult
4,000 lb	21511	3 lb	Consult
5,000 lb SE	102884	3 lb	Consult
5,000 lb LE	21512	5 lb	Consult
10,000 lb	21513	5 lb	Consult
Non-NTEP Certified			
250 lb	176426	3 lb	Consult
500 lb	17125	3 lb	Consult
15,000 lb	17155	9 lb	Consult
20,000 lb	17159	10 lb	Consult
NTEP Certified 50 ft Cable			
5,000 lb SE	196716	3 lb	Consult

SE=small envelope; LE=large envelope

Dimensions

Rated Capacity	T	L1	C1	W	H	D	C	F	G
250 to 500	1/2-20 UNF	0.62	0.53	1.25	1.00	5.12	1.00	3.00	0.50
1,000 to 5,000 SE	1/2-20 UNF	0.62	0.53	1.25	1.25	5.12	1.00	3.00	0.62
5,000 LE to 10,000	3/4-16 UNF	0.75	0.78	1.50	1.50	6.75	1.50	3.75	0.75
15,000 to 20,000	1-14 UNS	1.00	1.03	2.00	2.00	8.88	2.00	4.88	1.00



Interchangeable Products

VPG® CELTRON®
SQB.....page 191

Weigh Module Available

RICE LAKE WEIGHING SYSTEMS
RL50210TA..... page 41
 RICE LAKE WEIGHING SYSTEMS
RL1800 Series..... page 52

Specifications

Full Scale Output:
3.0 mV/V

Output Resistance:
349 to 355 ohm

Input Resistance:
343 to 357 ohm

Material/Finish:
High-alloy steel, nickel plated

Temperature:
Compensated:
14 °F to 104 °F (-10 °C to 40 °C)
Operating:
0 °F to 150 °F (-18 °C to 65 °C)

Seal Type:
Environmentally sealed, IP67

Safe Overload:
150% full scale

Safe Sideload:
100% full scale

Rated Excitation:
5 to 10 V

Nonlinearity:
0.03% full scale

Hysteresis:
0.02% full scale

Insulation Resistance:
5,000 megohm

Deflection at Capacity:
250 to 1,500 lb: 0.013 in
1,000 to 5,000 SE lb: 0.017 to 0.025 in
5,000 LE to 10,000 lb: 0.025 to 0.035 in
15,000 to 20,000 lb: 0.048 to 0.063 in

Cable Length:
20 ft

Cable Diameter:
0.200 in
Polyurethane jacket

Cable Color Code:
Red +Excitation
Black -Excitation
Green +Signal
White -Signal

Warranty:
One-year limited

Approvals:
cFMus
NTEP

