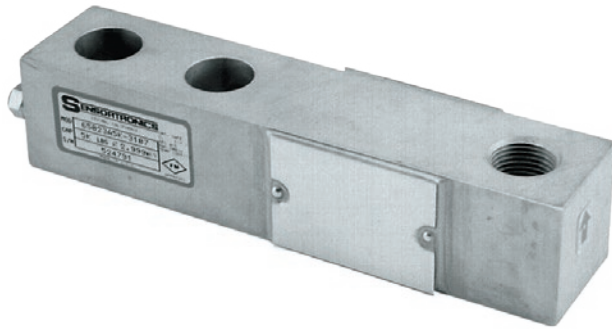


65023SS

Stainless Steel, Environmentally Sealed, IP67



Picture is a representation of actual product

Approvals

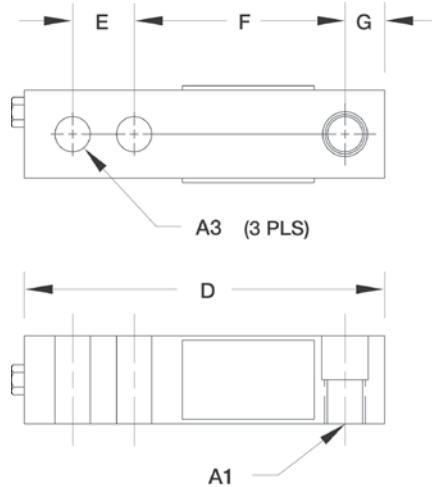


Order Information

Load Rating	Part #	Est. Weight	Price
Threaded Hole			
250 lb	46499	3 lb	Consult
500 lb	17188	3 lb	Consult
15,000 lb	17156	9 lb	Consult
20,000 lb	17160	9 lb	Consult

Dimensions

Rated Capacity	A1	A2	A3	B	C	D	E	F	G
lb/in									
250 to 500	1/2-20 UNF	0.50	0.53	1.25	1.00	5.12	1.00	3.00	0.50
15,000 to 20,000	1-14 UNS	1.00	1.03	2.00	2.00	8.88	2.00	4.88	1.00



Weigh Module Available

- RICE LAKE WEIGHING SYSTEMS
RL50210TA.....page 43
- RICE LAKE WEIGHING SYSTEMS
RL1800 Series..... page 54

Specifications

- Full Scale Output:**
3.0 mV/V
- Output Resistance:**
349 to 355 ohm
- Input Resistance:**
343 to 357 ohm
- Material/Finish:**
Stainless steel
- Temperature:**
Operating range
0 °F to 150 °F (-18 °C to 65 °C)
- Seal Type:**
Environmentally sealed, IP67
- Safe Overload:**
150% full scale
- Safe Sideload:**
100% full scale
- Rated Excitation:**
5 to 10 VDC (15 V maximum)
- Nonlinearity:**
0.03% full scale
- Hysteresis:**
0.02% full scale
- Insulation Resistance:**
5,000 megohm
- Deflection at Capacity:**
250 to 500 lb: 0.013 in
15,000 to 20,000 lb: 0.048 to 0.063 in
- Cable Length:**
20 ft
- Cable Diameter:**
0.200 in
Polyurethane jacket
- Cable Color Code:**
Red +Excitation
Black -Excitation
Green +Signal
White -Signal
- Warranty:**
One-year limited
- Approvals:**
cFMus