

65040A

Alloy Steel, Environmentally Sealed, NTEP Certified Class IIIIL Multiple Cell 1:6,000/1:10,000, IP67

SENSORTRONICS®
V/pc®



Picture is a representation of actual product

Approvals



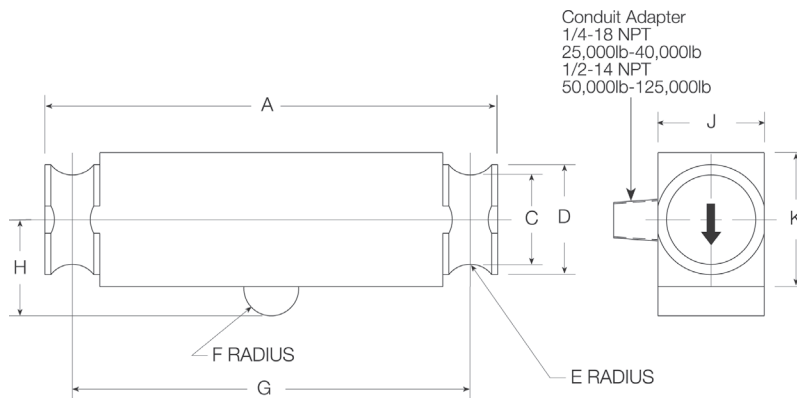
Order Information

Load Rating	Part #	Est. Weight	Price
NTEP Certified			
25,000 lb	21598	11 lb	Consult
40,000 lb	21599	11 lb	Consult
50,000 lb SE	69562	11 lb	Consult
50,000 lb	21600	19 lb	Consult
60,000 lb	21601	19 lb	Consult
75,000 lb	21602	19 lb	Consult
100,000 lb	21603	40 lb	Consult
125,000 lb	21604	40 lb	Consult

SE=small envelope

Dimensions

Rated Capacity	A	C	D	E	F	G	H	J	K
lb/in									
25,000 to 50,000 SE	8.25	1.63	2.00	0.50	0.50	7.25	1.75	1.94	2.44
50,000 to 75,000	11.50	1.70	2.20	0.75	1.00	10.00	2.00	1.94	2.94
100,000 to 125,000	14.50	2.44	3.20	1.00	1.50	12.50	2.75	2.90	3.86



Interchangeable Products

RICE LAKE WEIGHING SYSTEMS
RL75040 page 144
 THURMAN®
TSC 840

Weigh Module Available

RICE LAKE WEIGHING SYSTEMS
Translink™ page 78

Specifications

- Full Scale Output:**
3.0mV/V
- Output Resistance:**
686 to 714 ohm
- Input Resistance:**
699 to 707 ohm
- Material/Finish:**
High-alloy steel, nickel plated
- Temperature:**
Compensated:
14 °F to 104 °F (-10 °C to 40 °C)
Operating:
0 °F to 150 °F (-18 °C to 65 °C)
- Seal Type:**
Environmentally sealed, IP67
- Safe Overload:**
150% full scale
- Safe Sideload:**
100% full scale
- Rated Excitation:**
5 to 10 VDC (15 V maximum)
- Combined Error:**
0.02% full scale
- Insulation Resistance:**
1,000 megohm
- Cable Length:**
35 ft
- Cable Diameter:**
25,000 lb: 0.200 in
50,000 to 125,000 lb: 0.305 in
Polyurethane jacket
- Cable Coloring:**
Red +Excitation
Black -Excitation
Green +Signal
White -Signal
- Warranty:**
One-year limited
- Approvals:**
cFMus
NTEP