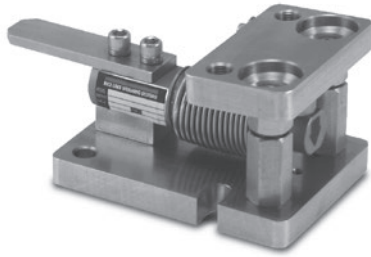


WEIGH MODULES

SURVIVOR® 1700HE Weigh Modules

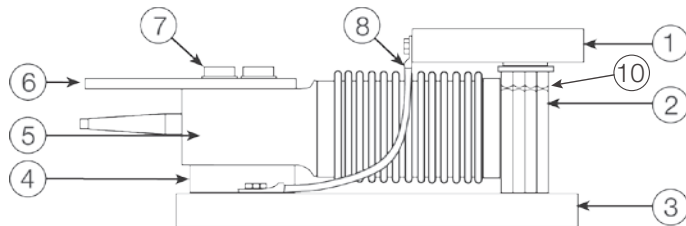
Stainless Steel



Part Number/Price

Ref#	Part#	Description	Price
Rated Capacity: 5 kg - 250 kg			
1	33036	Top-plate, stainless steel	Consult
2	125661	Coupling nut	Consult
3	33035	Base plate, stainless steel	Consult
4	33037	Load cell spacer, stainless steel	Consult
5	32678	Load cell, RLHBB - 5 kg, OIML C3	Consult
	31259	Load cell, RLHBB - 20 kg, OIML C3	Consult
	31260	Load cell, RLHBB - 50 kg, OIML C3	Consult
	31261	Load cell, RLHBB - 100 kg, OIML C3	Consult
	31262	Load cell, RLHBB - 200 kg, OIML C3	Consult
	31263	Load cell, RLHBB - 250 kg, OIML C3	Consult
6	33038	Cable guard plate, stainless steel	Consult
7	33040	Load cell bolt, stainless steel	Consult
8	33039	Ground strap	Consult
	49504	Load button	Consult
9	15058	Cap screw	Consult
10	14662	Jam nut	Consult
Rated Capacity: 500 kg - 2,000 kg			
1	159182	Top-plate, stainless steel	Consult
2	125661	Coupling nut	Consult
3	159181	Base plate, stainless steel	Consult
4	159186	Load cell spacer, stainless steel	Consult
5	31253	Load cell, RLHTO - 500 kg, OIML C3	Consult
	31250	Load cell, RLHTO - 1000 kg, OIML C3	Consult
	31251	Load cell, RLHTO - 2000 kg, OIML C3	Consult
6	159187	Cable guard plate, stainless steel	Consult
7	159191	Load cell bolt, stainless steel	Consult
8	159183	Ground strap	Consult
9	104283	Cap screw	Consult
10	159188	Load button	Consult
11	14662	Jam nut	Consult
Rated Capacity: 5000 kg			
1	33043	Top-plate, stainless steel	Consult
2	33048	Checking/jacking assembly, stainless steel	Consult
3	33042	Base plate, stainless steel	Consult
4	33044	Load cell spacer, stainless steel	Consult
5	31252	Load cell, RLHTO - 5000 kg, OIML C3	Consult
6	33045	Cable guard plate, stainless steel	Consult
7	33047	Load cell bolt set, stainless steel	Consult
8	33046	Ground strap	Consult

(See Diagram SURVIVOR 1700HE-A)



SURVIVOR 1700HE-A

Weigh Modules