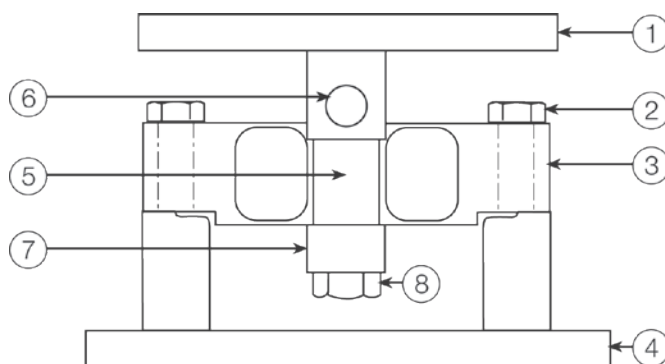
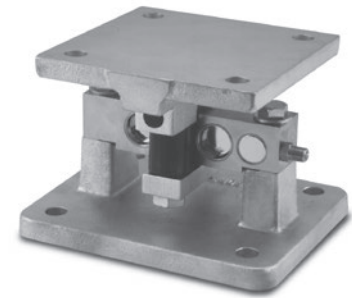


SURVIVOR® 2100HE Weigh Modules

Part Number/Price

Ref#	Part#	Description	Price
20,000 lb - 25,000 lb capacity			
1	33013	Top-plate, stainless steel	Consult
2	33474	Load cell bolt, stainless steel	Consult
3	53481	Load cell, RL75060S - 20,000 lb	Consult
	50559	Load cell, RL75060S - 25,000 lb	Consult
4	33012	Base plate, stainless steel	Consult
5	33015	Bushing set, rubber tube	Consult
6	33014	Load pin, stainless steel	Consult
7	33105	Retaining plate, stainless steel	Consult
8	33473	Retaining bolt, stainless steel	Consult
35,000 lb - 75,000 lb capacity			
1	33008	Top-plate, stainless steel	Consult
2	33431	Load cell bolt, stainless steel	Consult
3	50560	Load cell, RL75060S - 35,000 lb	Consult
	50561	Load cell, RL75060S - 50,000 lb	Consult
	50562	Load cell, RL75060S - 60,000 lb	Consult
	50563	Load cell, RL75060S - 75,000 lb	Consult
4	33007	Base plate, stainless steel	Consult
5	33020	Bushing set, rubber tube	Consult
6	33009	Load pin, stainless steel	Consult
7	33106	Retaining plate, stainless steel	Consult
8	33469	Retaining bolt, stainless steel	Consult
100,000 lb capacity			
1	33008	Top-plate, stainless steel	Consult
2	33431	Load cell bolt, stainless steel	Consult
3	50564	Load cell, RL75060S - 100,000 lb	Consult
4	33007	Base plate, stainless steel	Consult
5	33010	Bushing set, rubber tube	Consult
6	33009	Load pin, stainless steel	Consult
7	33107	Retaining plate, stainless steel	Consult
8	33430	Retaining bolt, stainless steel	Consult

(See Diagram SURVIVOR 2100HE-A)



SURVIVOR 2100HE-A