



Picture is a representation of actual product

### Approvals

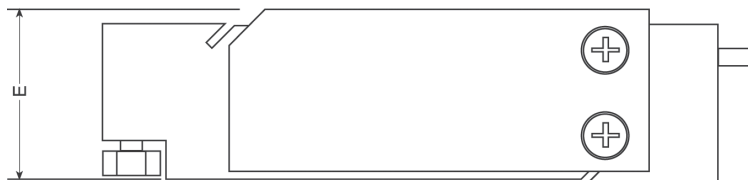
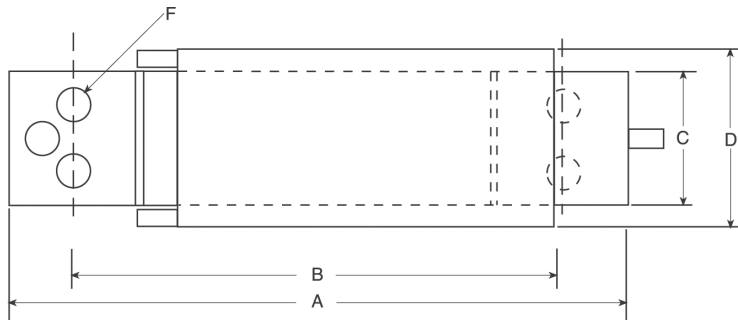


### Order Information

Load Rating	Part #	Est. Weight	Price
3 kg	47882	1 lb	Consult
5 kg	47883	1 lb	Consult
7 kg	47884	1 lb	Consult
10 kg	47885	1 lb	Consult

### Dimensions

Rated Capacity	A	B	C	D	E	F
kg/mm						
3 to 10	117.9	93.7	25.4	33.3	32.5	1/4-20UNC x 10DP



### Specifications

**Full Scale Output:**

2.0 mV/V

**Output Resistance:**

350 (± 3) ohm

**Input Resistance:**

415 (± 15) ohm

**Material/Finish:**

Anodized aluminum

**Temperature:**

Operating:  
0 °F to 150 °F (-18 °C to 65 °C)

**Seal Type:**

Environmentally sealed, IP65

**Safe Overload:**

150% full scale

**Rated Excitation:**

5 to 10 VDC (15 V maximum)

**Combined Error:**

0.02% full scale

**Insulation Resistance:**

5,000 megohm

**Deflection at Capacity:**

0.015 in

**Cable Length:**

1 m

**Cable Diameter:**

0.200 in PVC jacket

**Cable Color Code:**

Green +Excitation  
Black -Excitation  
Red +Signal  
White -Signal  
Blue +Sense  
Brown -Sense

**Max Platform Size:**

13.78 x 13.78 in

**Warranty:**

One-year limited

**Approvals:**

cFMus  
OIML