



Picture is a representation of actual product

### Approvals

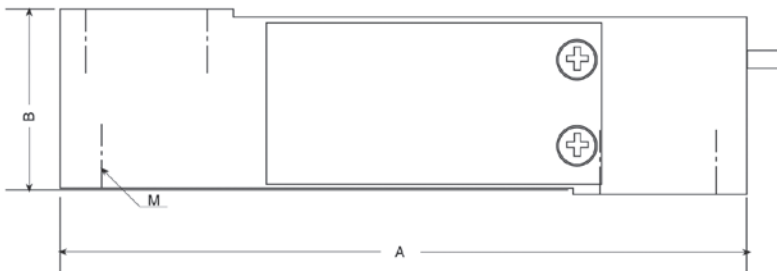
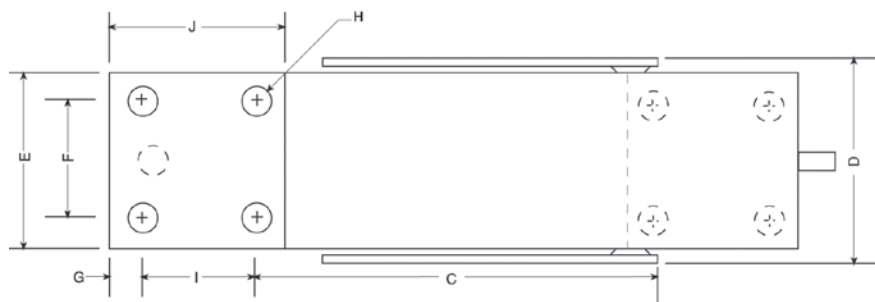


### Order Information

Load Rating	Part #	Est. Weight	Price
200 kg	47880	3 lb	Consult
250 kg	47881	3 lb	Consult

### Dimensions

Rated Capacity	A	B	C	D	E	F	G	I	J	H	M
kg/mm											
200 to 250	150.1	39.9	86.6	43.4	38.1	25.4	6.35	25.4	38.1	1/4-20 UNC x 13 DP	1/4-28 UNF x 10 DP



### Specifications

- Full Scale Output:**  
2.0 mV/V
- Output Resistance:**  
351 (± 5) ohm
- Input Resistance:**  
380 (± 15) ohm
- Material/Finish:**  
Stainless steel
- Temperature:**  
Operating range  
0 °F to 150 °F (-18 °C to 65 °C)
- Seal Type:**  
Environmentally sealed, IP64
- Safe Overload:**  
150% full scale
- Rated Excitation:**  
5 to 10 VDC (15 V maximum)
- Combined Error:**  
0.02% full scale
- Insulation Resistance:**  
2,000 megohm
- Deflection at Capacity:**  
0.015 in
- Cable Length:**  
10 ft
- Cable Diameter:**  
0.200 in  
PVC jacket
- Cable Color Code:**  
Green +Excitation  
Black -Excitation  
Red +Signal  
White -Signal  
Blue +Sense  
Brown -Sense
- Platform Size:**  
15.5 × 15.5 in
- Warranty:**  
One-year limited
- Approvals:**  
cFMus