



Picture is a representation of actual product

### Approvals

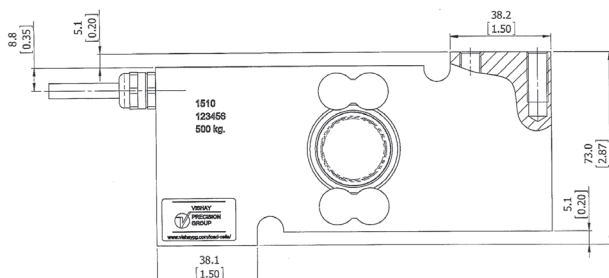
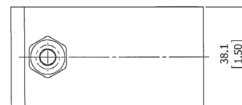
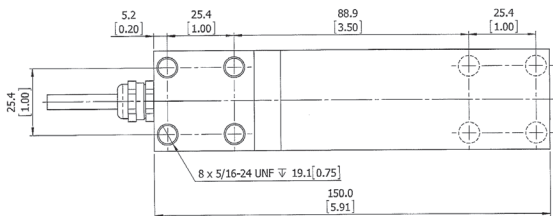
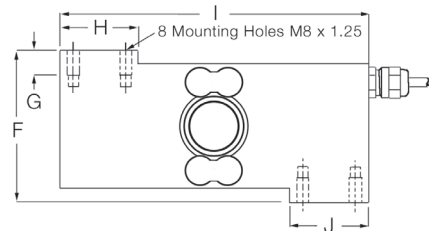
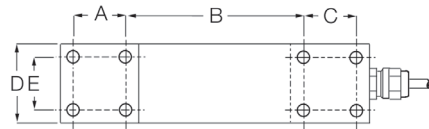


### Order Information

Load Rating	Part #	Est. Weight	Price
<b>OIML</b>			
100 kg	65851	6 lb	Consult
250 kg	65852	6 lb	Consult
500 kg	65853	6 lb	Consult
<b>NTEP Certified</b>			
500 kg	167585	6 lb	Consult

### Dimensions

Rated Capacity	A	B	C	D	E	F	G	H	I	J
kg/mm										
100 to 500	25.4	86.3	25.4	38.1	25.4	72.8	11.9	38.1	149.9	38.1



### Specifications

- Full Scale Output:** 2.0 mV/V
- Output Resistance:** 350 (± 3) ohm
- Input Resistance:** 380 (± 10) ohm
- Material/Finish:** Stainless steel
- Temperature:**
  - Compensated: 14 °F to 104 °F (-10 °C to 40 °C)
  - Operating: 0 °F to 150 °F (-18 °C to 65 °C)
- Seal Type:** Welded-seal, IP68
- Safe Overload:** 150% at center loading point, full scale
- Rated Excitation:** 5 to 10 VDC (15 V maximum)
- Combined Error:** 0.020% full scale
- Insulation Resistance:** 2,000 megohm
- Cable Length:** 10 ft
- Cable Diameter:** 0.220 in  
Polyurethane jacket
- Cable Color Code:**
  - Green +Excitation
  - Black -Excitation
  - Red +Signal
  - White -Signal
  - Blue +Sense
  - Brown -Sense
- Max Platform Size:** 23.62 × 23.62 in
- Warranty:** One-year limited
- Approvals:** cFMus, OIML, NTEP

TEDEA-HUNTLEIGH® VPC®