

Picture is a representation of actual product

Approvals



Available upon request

Order Information

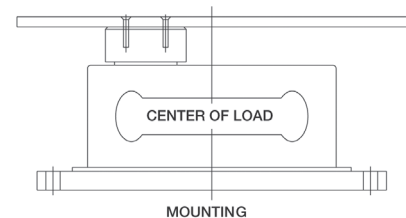
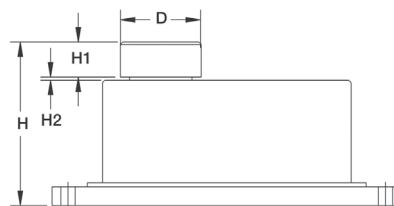
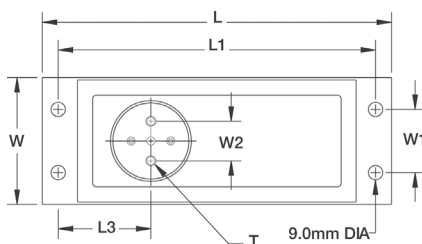
Load Rating	Part #	Est. Weight	Price
<b>Stainless Steel</b>			
2 kg*	17567	8 lb	Consult
5 kg	17568	8 lb	Consult
7 kg	17569	8 lb	Consult
10 kg	17570	8 lb	Consult
15 kg	17571	8 lb	Consult
20 kg	17572	8 lb	Consult
30 kg	17573	8 lb	Consult
50 kg	17574	8 lb	Consult
<b>Alloy Steel</b>			
2 kg*	17559	8 lb	Consult
5 kg	17560	8 lb	Consult
7 kg	17561	8 lb	Consult
10 kg	17562	8 lb	Consult
15 kg	17563	8 lb	Consult
20 kg	17564	8 lb	Consult
30 kg	17565	8 lb	Consult
50 kg	17566	8 lb	Consult

\*Non-NTEP Certified

Note: The special fluid damped operation is particularly well-suited for applications where quick weighing is required, e.g., checkweighers

Dimensions

Rated Capacity	D	H	H1	H2	L	L1	L3	T	W	W1	W2
kg/mm											
2 to 50	50 dia	115.0	21.0	2.0	220.0	200.0	58.5	1/4-20 UNC x 10 DP	80.0	40.0	25.0



Interchangeable Products

RICE LAKE WEIGHING SYSTEMS®  
**RL260FD\*** .....page 168

\*3000d NTEP, 16.4 ft cable

Specifications

Full Scale Output:

2.0 mV/V

Output Resistance:

350 (± 3) ohm

Input Resistance:

415 (± 15) ohm

Material/Finish:

Anodized aluminum in alloy steel or stainless steel

Temperature:

Compensated:

14 °F to 104 °F (-10 °C to 40 °C)

Operating:

0 °F to 150 °F (-18 °C to 65 °C)

Seal Type:

Environmentally sealed, IP66

Safe Overload:

150% at center loading point, full scale

Rated Excitation:

5 to 10 VDC (15 V maximum)

Combined Error:

0.025% full scale

Insulation Resistance:

2,000 megohm

Cable Length:

10 ft

Cable Diameter:

0.370 in

PVC jacket

Cable Color Code:

Green +Excitation

Black -Excitation

Red +Signal

White -Signal

Blue +Sense

Brown -Sense

Warranty:

One-year limited

Approvals:

NTEP

OIML (Available upon request)

VPG®  
 TEDEA-HUNTLEIGH®