



Picture is a representation of actual product

**Approvals**



Available upon request

Available upon request

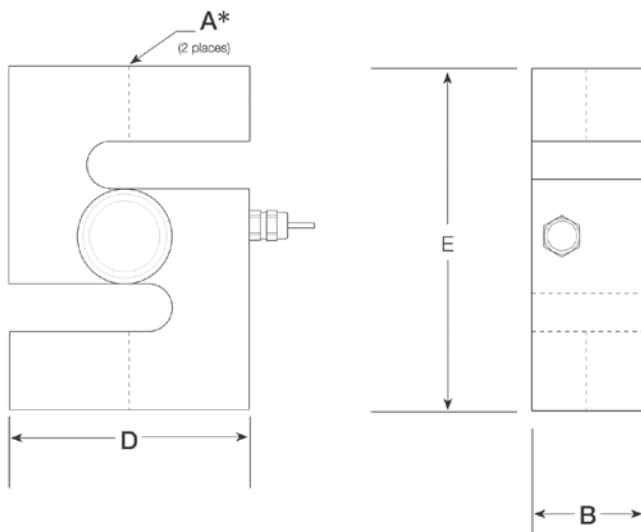
**Order Information**

Load Rating	Part #	Est. Weight	Price
500 kg	<b>36389</b>	4 lb	Consult
1,000 kg	<b>36390</b>	4 lb	Consult
2,000 kg	<b>36391</b>	4 lb	Consult

**Dimensions**

Rated Capacity	A*	B	D	E
kg/mm				
500 to 1,000	1/2-20 UNF	33.5	73.2	94.0
2,000	3/4-16 UNF	33.5	73.2	94.0

Metric threads available



**Weigh Module Available**

RICE LAKE WEIGHING SYSTEMS  
**ITCM Isolated Tension Cell Mount**..... page 40

**Specifications**

**Full Scale Output:**

2.0 mV/V

**Output Resistance:**

350 (± 3) ohm

**Input Resistance:**

400 (± 20) ohm

**Material/Finish:**

Stainless steel

**Temperature:**

Compensated range  
14 °F to 104 °F (-10 °C to 40 °C)  
Operating range  
0 °F to 150 °F (-18 °C to 65 °C)

**Seal Type:**

Welded-seal, IP68

**Safe Overload:**

150% full scale

**Rated Excitation:**

5 to 10 VDC (15 V maximum)

**Combined Error:**

0.02% full scale

**Insulation Resistance:**

1,000 megohm

**Cable Length:**

5 m

**Cable Diameter:**

0.220 in  
Polyurethane jacket

**Cable Color Code:**

Blue +Excitation  
Black -Excitation  
White +Signal  
Red -Signal  
Green +Sense  
Grey -Sense

**Warranty:**

One-year limited

**Approvals:**

cFMus  
NTEP  
Ex (Available upon request)  
OIML (Available upon request)

VPG  
TEDEA-HUNTLEIGH