

# Load Cell Isolators



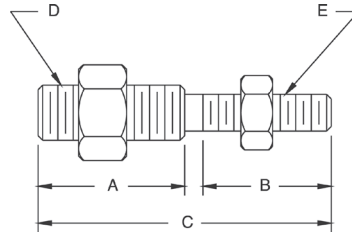
Power surges such as those caused by welding or electrical shorts frequently damage load cells and indicators. To prevent such damage, these isolators electrically separate the mechanical assembly from its tension-type load cell.

## Part Number/Price

Part #	Height Thread Size	Diameter	Safe Load*	Price
17722	3/8-16 UNC	2.50 in	600 lb	Consult
17724	1/2-13 UNC	2.50 in	600 lb	Consult
17726	1/2-20 UNF	2.50 in	600 lb	Consult
17725	1/2-13 UNC	2.00 in	3,000 lb	Consult
17723	3/8-24 UNF	2.50 in	600 lb	Consult
17728	1/2-13 UNC × 1/2-20 UNF	2.50 in	600 lb	Consult
17732	1/4-20 UNC	1.12 in	250 lb	Consult

\*Do not exceed the safe load

# Threaded Adapters



## Standard Features

- For coupling isolators with load cells and steelyard rods
- Supplied with jam nuts
- Stainless steel

HARDWARE AND ACCESSORIES

## Part Number/Price

Part #	A	B	C	D	E	Safe Load*	Price
33561	-	-	2.00 in	1/4-28 UNF	1/4-28 UNF	300 lb	Consult
33562	0.94 in	0.94 in	2.00 in	1/4-28 UNF	1/4-20 UNC	300 lb	Consult
33563	0.92 in	1.02 in	2.06 in	1/4-28 UNF	3/8-24 UNF	300 lb	Consult
33564	0.94 in	0.94 in	2.00 in	1/4-28 UNF	3/8-16 UNC	300 lb	Consult
33565	1.06 in	1.06 in	2.25 in	1/4-20 UNC	3/8-16 UNC	300 lb	Consult
33567	1.06 in	1.06 in	2.25 in	1/4-28 UNF	1/2-13 UNC	300 lb	Consult
33568	-	-	2.00 in	3/8-24 UNF	3/8-24 UNF	500 lb	Consult
33569	0.91 in	0.91 in	2.00 in	3/8-16 UNC	3/8-16 UNC	500 lb	Consult
33570	1.06 in	1.06 in	2.25 in	3/8-24 UNF	1/2-13 UNC	500 lb	Consult
33571	1.31 in	1.31 in	2.75 in	1/2-13 UNC	5/8-11 UNC	3,000 lb	Consult
33572	0.87 in	0.87 in	2.00 in	1/2-13 UNC	1/2-20 UNF	3,000 lb	Consult
33573	-	-	2.06 in	1/2-20 UNF	1/2-20 UNF	3,000 lb	Consult
33574	1.31 in	1.31 in	2.75 in	1/2-20 UNF	5/8-11 UNC	3,000 lb	Consult
33575	1.31 in	1.31 in	3.00 in	3/4-16 UNF	3/4-10 UNC	7,000 lb	Consult

\*Do not exceed the safe load