

Traffic Light Kits



Traffic Light

Standard Features

Light

- Housing meets or exceeds ITE specifications
- Stainless steel hardware
- 8 in LED lights, enclosure injection molded polycarbonate
- LED modules
- Compliant to ITE UTCSH - LED circular signal
- Temperature compensated power supplies for long LED life
- Conformal coated power supplies
- Intertek/ETL certified and listed on ETL certification program
- 135 VAC

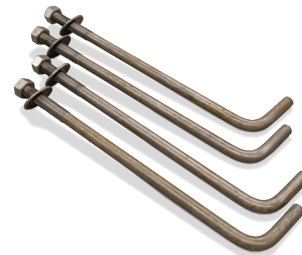
Pole

- 4.5 in outer dimension aluminum pole
- Cast aluminum base mounts to concrete with four anchor bolts
- Base underside has integrated anchor bolt guide to ensure proper anchor placement.
- Removable 8 in access door for cable splicing and bolt attachments (H × W) 15 × 13-3/4 in

AUTOMATED TICKETING

Part Number/Price

Part #	Description	Est. Weight	Price
23146	2 Section, with mounting hardware for 4.5 in pole 120 VAC LED	25 lb	Consult
85789	Kit, traffic light pole. Includes 8 ft aluminum pole, base & four 18 in anchors. Bolts with nuts and washers. Option: Pole cap (PN 179172)	70 lb	Consult
179172	Aluminum pole cap, 4.5 in (for use when traffic light not mounted on pole)	-	Consult
87111	Side mount brackets include 12 in nipples and universal hubs, bracket, aluminum upper and lower assembly	10 lb	Consult
84504	Anchor bolt with nut washer	2 lb	Consult
160242	Kit, Dual Traffic Light Includes (2) 23146 traffic lights, (2) 85789 traffic light poles (1) 160208 and electrical drawing (170218)	-	Consult
160208	Control panel, dual traffic light	-	Consult
156106	Buzzer box, 115 VAC	-	Consult
163734	Switch box, remote (includes legend plates for Zero, Print, Tare, Cancel and Accept)	-	Consult



Anchor bolt with nut and washer



Side Mount Brackets



Control Panel



Buzzer Box



Switch Box

Traffic Light Pole

