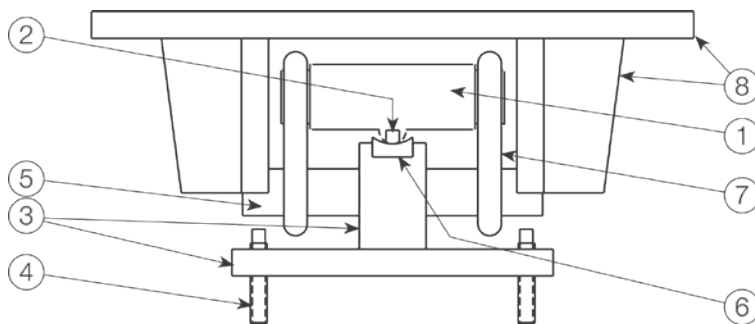


Translink™ Parallel Link Truck Scale Assembly

Part Number/Price

Ref#	Part#	Description	Price
	25708	Installation manual	Consult
Rated Capacity: 25,000 lb - 40,000 lb			
1	21614	Load cell, RL75040 - 25,000 lb	Consult
	21615	Load cell, RL75040 - 40,000 lb	Consult
2	15300	Tension pin	Consult
3	18455	Base plate	Consult
4	22281	Leveling bolt	Consult
5	18468	Pin, 1.75 in Diameter x 11 7/32 in steel	Consult
6	18453	Bearing pad, .75 in x 1.5 in x 4 in steel	Consult
7	17810	Link, weldless alloy steel	Consult
8	18467	Top-plate	Consult
Rated Capacity: 50,000 lb - 75,000 lb			
1	21616	Load cell, RL75040 - 50,000 lb	Consult
	21617	Load cell, RL75040 - 60,000 lb	Consult
	21618	Load cell, RL75040 - 75,000 lb	Consult
	21621	Load cell, RL75040 - 50,000 lb, 50' cable	Consult
	21622	Load cell, RL75040 - 60,000 lb, 50' cable	Consult
2	15300	Tension pin	Consult
3	18458	Base plate	Consult
4	22281	Leveling bolt	Consult
5	18469	Pin	Consult
6	18453	Bearing pad	Consult
7	65430	Link, weldless end	Consult
8	18466	Top-plate	Consult
Rated Capacity: 50,000 lb - 100,000 lb			
1	21616	Load cell, RL75040 - 50,000 lb	Consult
	21621	Load cell, RL75040 - 50,000 lb, 50' cable	Consult
	21611	Load cell, RL75223 - 50,000 lb	Consult
	21612	Load cell, RL75223 - 65,000 lb	Consult
	21613	Load cell, RL75223 - 100,000 lb	Consult
2	15302	Tension pin	Consult
3	18458	Base plate	Consult
4	22281	Leveling bolt	Consult
5	18470	Pin	Consult
6	18452	Bearing pad for RL75223 load cell	Consult
6	18453	Bearing pad for RL75040 load cell	Consult
7	65430	Link, weldless	Consult
8	18465	Top-plate	Consult

(See Diagram Translink-A)



Translink-A

