

Uni-9

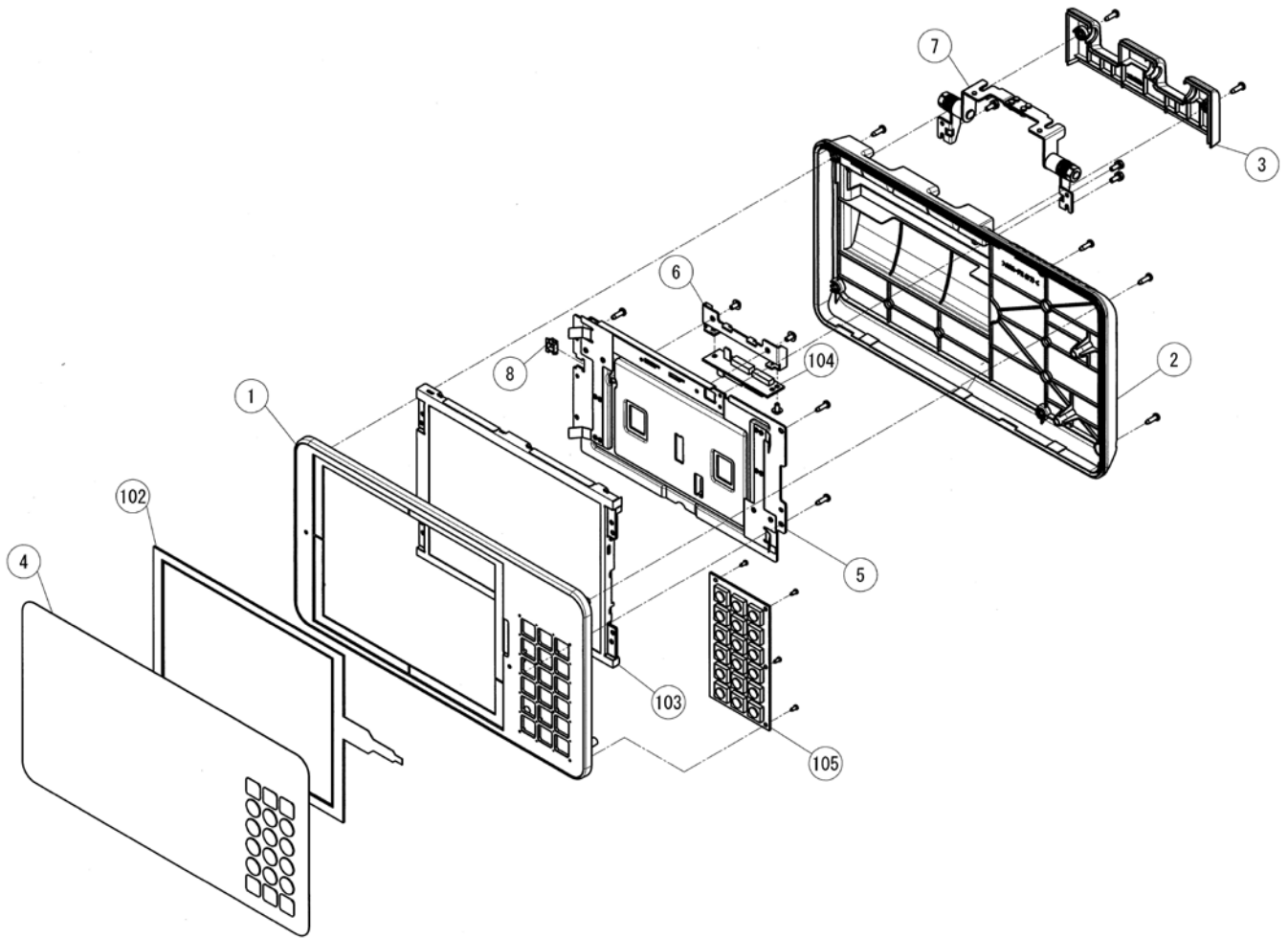
Operation Unit - DB



Part Number/Price

Ref #	Part #	Description	Synonym	Price
1	185536	Case, controller, front	000-138-1788-04	Consult
2	185537	Case, controller, rear	000-138-1789-08	Consult
3	185538	Cover, display, connector	000-138-1790-02	Consult
4	185539	Sheet, display	100-005-0797-00	Consult
5	185540	Frame, operation	000-138-1792-00	Consult
6	185541	Bracket, board, junction	138-2444-16	Consult
7	185542	Hinge assy, torque	000-141-9508-05	Consult
8	185543	Accessory, fastener, edge saddle	106-7324-00	Consult
100*	185544	Harness, C2, display, internal	138-5922-39	Consult
101*	185545	Harness, C4, LCD, internal	140-7163-28	Consult
102	87529	Touch panel, analog	091-8918-25	Consult
103	185546	Display, LCD, TFT	142-1591-03	Consult
104	87519	PWB P-985 display harness junction board	102-3034-15	Consult
105	87525	PWB P-981-2, tactile keyboard	100-8470-10	Consult

* See Electric Unit Wiring Diagram - Uni-9 DB on page 83: items 5-100 and 5-101



Printing Scales